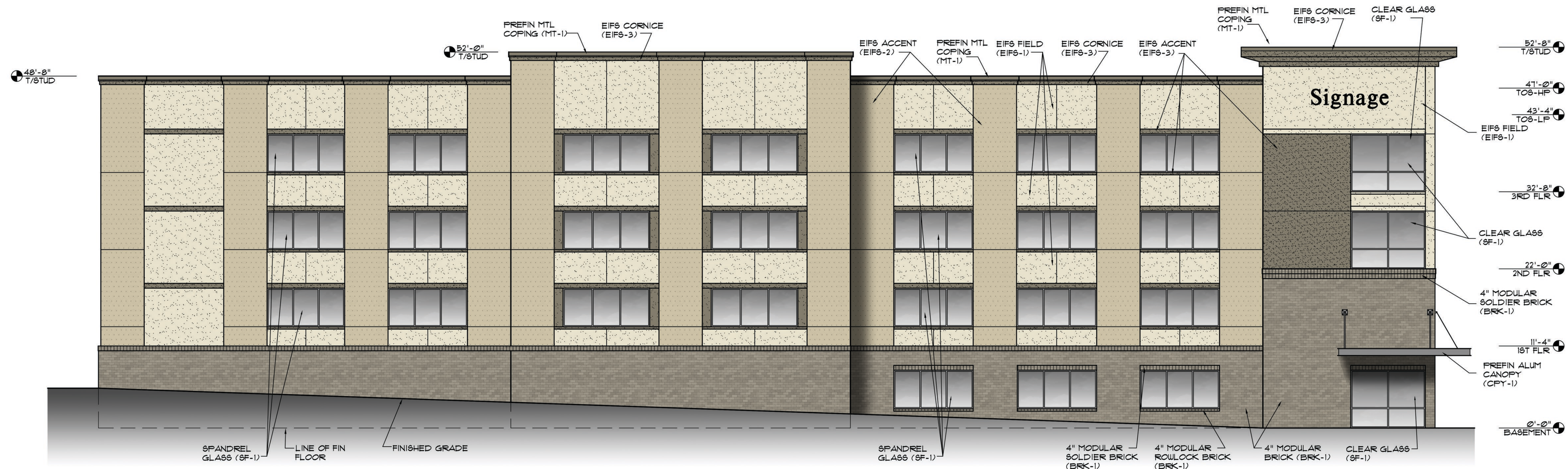


1 SOUTH ELEVATION (FRONT)
SCALE: 1/8"=1'-0"

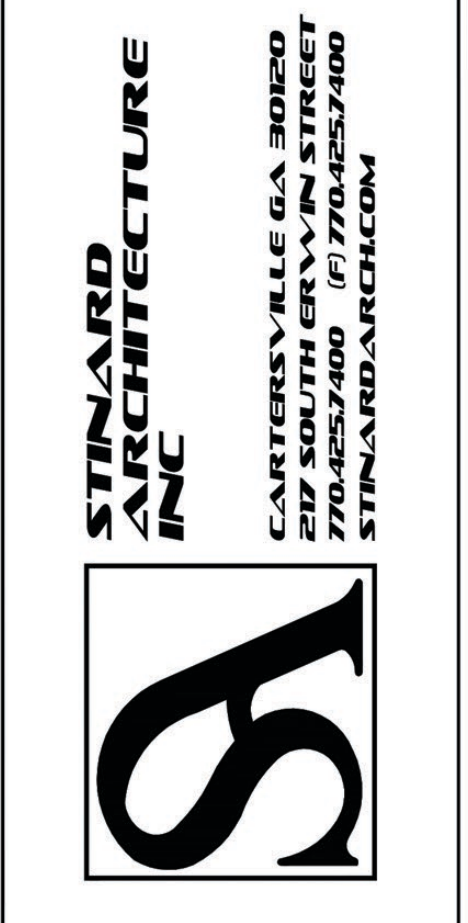


2 WEST ELEVATION (SIDE)
SCALE: 1/8"=1'-0"

EXTERIOR FINISH PERCENTAGE	
SOUTH	FRONT ELEV
TOTAL: 7,339 SF	
GLASS: 1,814 SF 28%	
EIFS: 4,116 SF 56%	
BRICK: 1,410 SF 19%	
WEST	SIDE ELEV
TOTAL: 8,820 SF	
GLASS: 1,528 SF 17%	
EIFS: 5,632 SF 64%	
BRICK: 1,660 SF 19%	
EAST	SIDE ELEV
TOTAL: 6,507 SF	
GLASS: 0 SF 0%	
EIFS: 5,678 SF 87%	
BRICK: 829 SF 13%	
NORTH	REAR ELEV
TOTAL: 5,546 SF	
GLASS: 0 SF 0%	
EIFS: 5,124 SF 92%	
BRICK: 422 SF 8%	

THESE DRAWINGS AND DESIGNS ARE THE PROPERTY OF STANARD ARCHITECTURE, INC. ALL INFORMATION CONTAINED HEREIN IS UNCLASSIFIED AND IS NOT TO BE REPRODUCED WITHOUT THE ARCHITECT'S PERMISSION. THEY WERE PREPARED FOR THE PROJECT AND SITE IN CONJUNCTION WITH THE ISSUANCE OF PERMITS AND ARE NOT SUITABLE FOR USE FOR ANY OTHER PROJECT. ANY REVISIONS MUST BE VERIFIED BY THE CONTRACTOR AND DISCREPANCIES BEFORE PROCEEDING WITH CONSTRUCTION. DO NOT SCALE DRAWINGS.

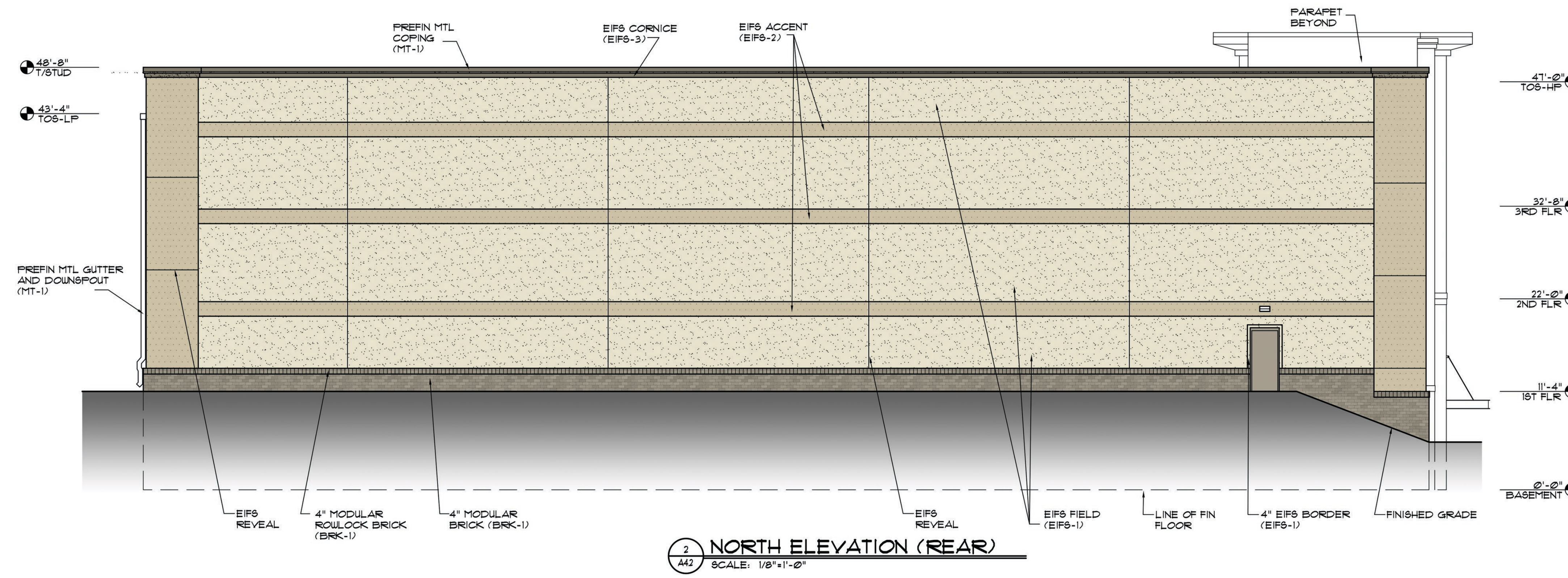
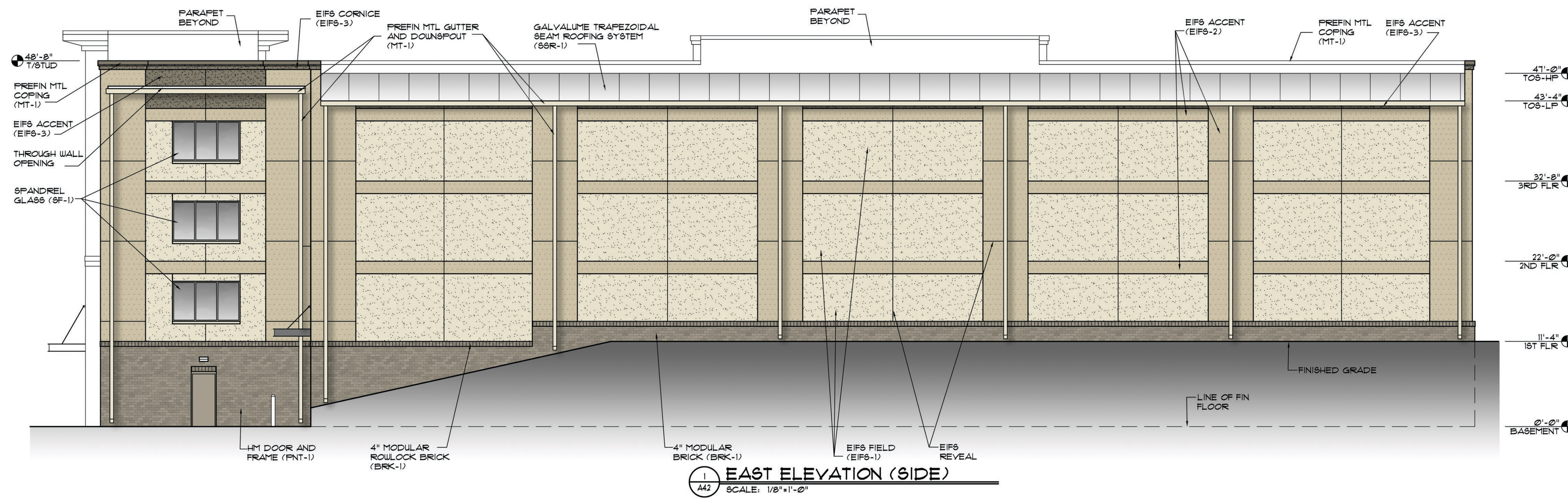
Proposal Self Storage
1915 Pharrs Road
Snellville, GA



ISSUE: NOT FOR CONSTRUCTION REVISIONS:

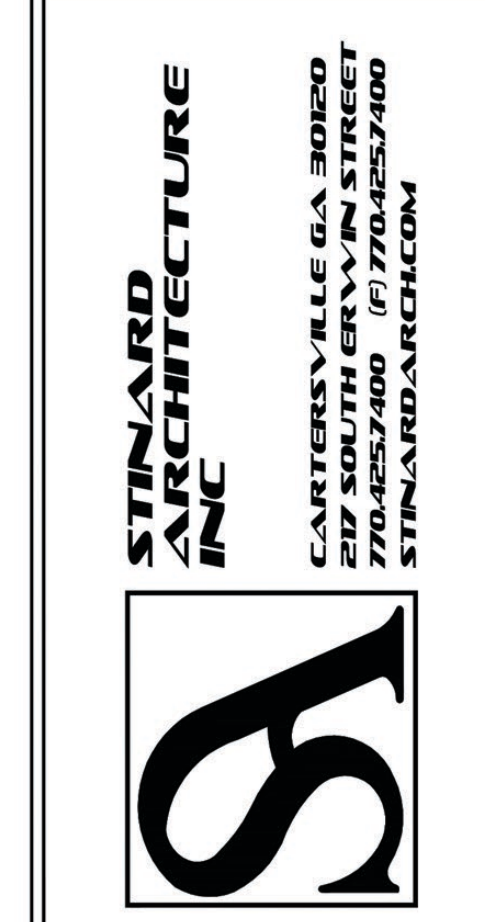
PROJECT NUMBER: 2025
DATE: 2-13-25

SHEET NUMBER: A4.1



THESE DRAWINGS AND DESIGNS ARE THE PROPERTY OF STANARD ARCHITECTURE INC. ALL RIGHTS ARE RESERVED. NO PART OF THESE DRAWINGS MAY BE REPRODUCED OR TRANSMITTED IN ANY FORM OR BY ANY MEANS, ELECTRONIC OR MECHANICAL, WITHOUT THE WRITTEN PERMISSION OF STANARD ARCHITECTURE INC. THESE DRAWINGS ARE TO BE USED ONLY FOR THE PROJECT AND SITE IN CONJUNCTION WITH THE ISSUE DATE AND ARE NOT SUITABLE FOR USE FOR ANY OTHER PROJECT. ANY DISCREPANCIES MUST BE VERIFIED BY THE CONTRACTOR AND DISCREPANCIES BEFORE PROCEEDING WITH CONSTRUCTION. DO NOT SCALE DRAWINGS.

Proposal Self Storage
 1915 Pharrs Road
 Snellville, GA



ISSUE: NOT FOR CONSTRUCTION REVISIONS:

PROJECT NUMBER: 2025
 DATE: 2-13-25

SHEET NUMBER: A4.2