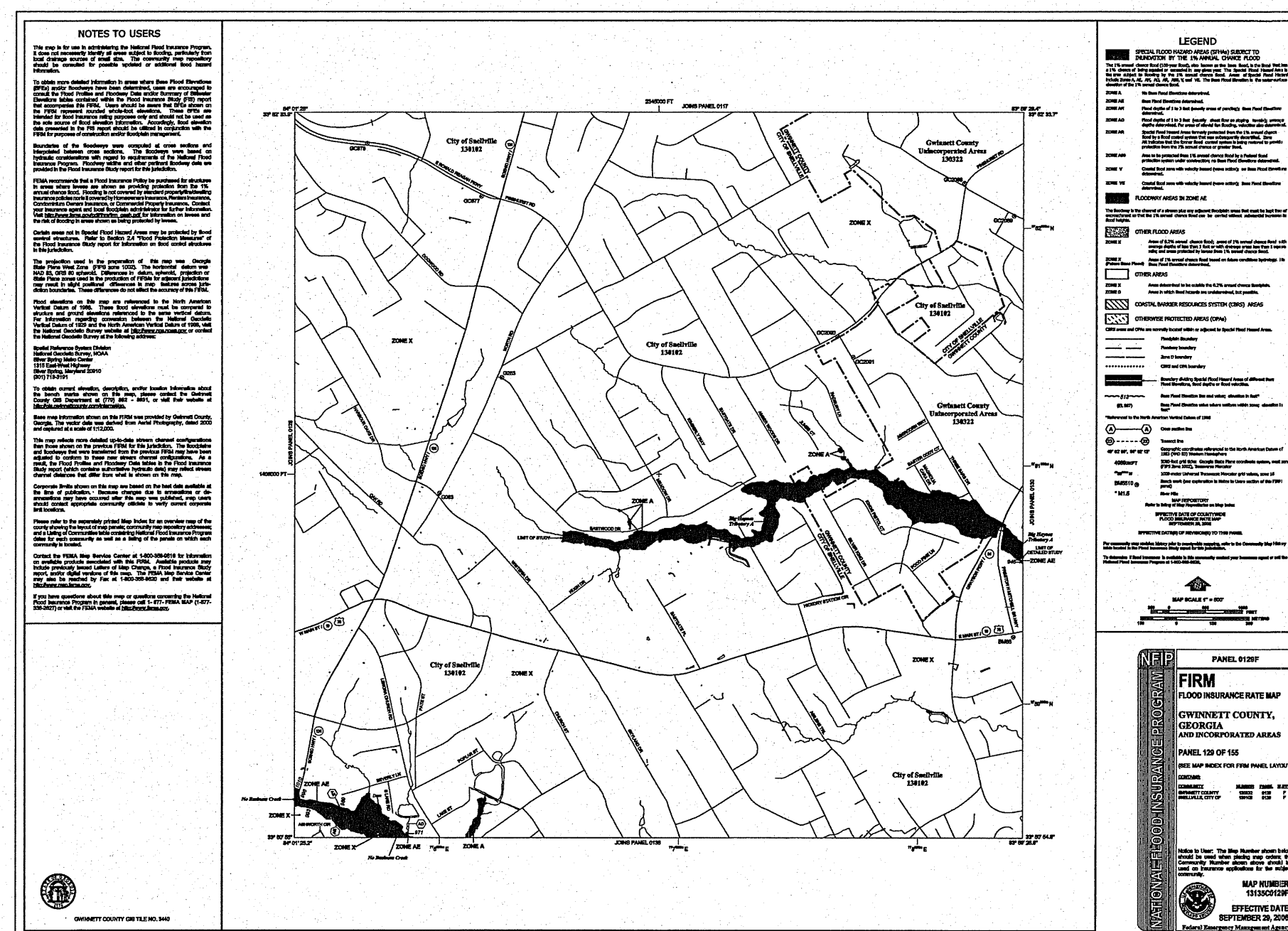


GRAVITY SEWER EXTENSION TO PARCEL 5026 038

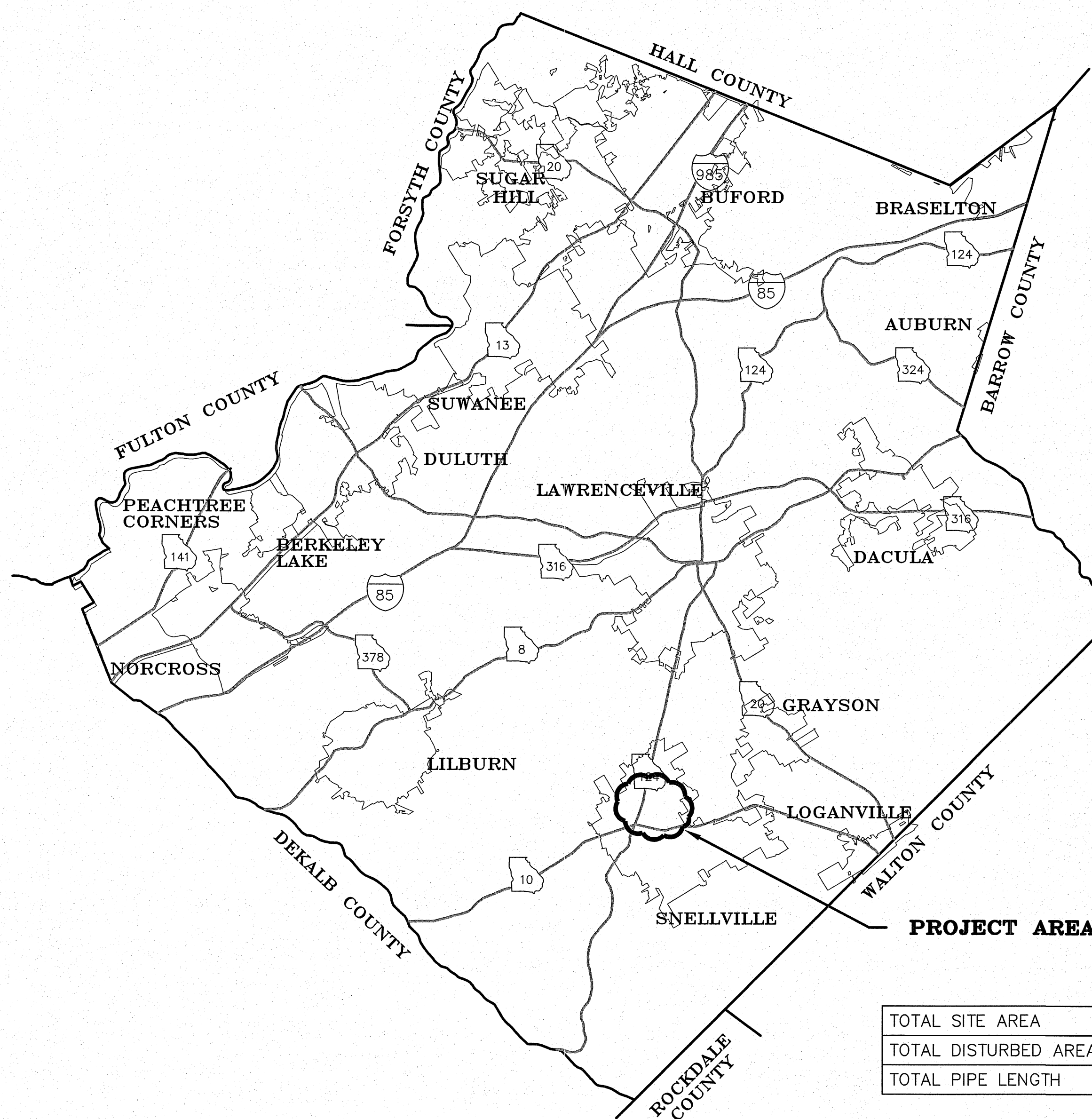
FOR THE
CITY OF SNELLVILLE
PPI PROJECT NUMBER E24114
LAND LOT 26 - DISTRICT 05
COMMISSION DISTRICT 3
BEGINNING OF PROJECT PARCEL # 5026 038
GWINNETT CASE # _____

EXHIBIT N



FLOODPLAIN ACREAGE WITHIN PROJECT LIMITS: 0 ACRES
 FIRM PANEL 13135C0129
 N.T.S.

SHEET INDEX	
SHEET NUMBER	SHEET TITLE
--	COVER
2	GENERAL NOTES AND LEGEND
3	SHEET INDEX
4-5	SANITARY SEWER PLAN AND PROFILE
6-8	CONSTRUCTION DETAILS
9	EROSION CONTROL PLAN, NOTES, AND DETAILS



planners • engineers • architects • surveyors

400 Pike Boulevard, Lawrenceville, Ga 30046
 770.338.8000 • www.ppi.us



TOTAL SITE AREA	0.18 ACRES
TOTAL DISTURBED AREA	0.18 ACRES
TOTAL PIPE LENGTH	582 LF

GWINNETT COUNTY
PROJECT LOCATION
 N.T.S.

24-HOUR CONTACT
MATTHEW PEPPER
2342 OAK ROAD
SNELLVILLE, GA 30078
17701 985-3502

CERTIFICATE OF DEVELOPMENT PLANS APPROVAL

ALL REQUIREMENTS OF THE GWINNETT COUNTY UNIFIED DEVELOPMENT ORDINANCE (UDO) RELATIVE TO THE PREPARATION AND SUBMISSION OF A DEVELOPMENT PERMIT APPLICATION HAVING BEEN FULFILLED, AND SAID APPLICATION AND ALL SUPPORTING PLANS AND DATA HAVING BEEN REVIEWED AND APPROVED BY ALL AFFECTED COUNTY DEPARTMENTS AS REQUIRED UNDER THEIR RESPECTIVE AND APPLICABLE REGULATIONS, APPROVAL OF THIS SITE PLAN IS HEREBY GRANTED AND ALL OTHER DEVELOPMENT PLANS WITH THIS PROJECT SHALL BE SUBJECT TO ALL FURTHER PROVISIONS OF SAID UDO.

DIRECTOR, DEPT. PLANNING & DEVELOPMENT _____ DATE _____

THIS CERTIFICATE EXPIRES TWELVE MONTHS FROM THE DATE OF APPROVAL UNLESS A DEVELOPMENT PERMIT IS ISSUED.

NO.	REVISION DESCRIPTION	DATE
0	ISSUED FOR BID	11/01/24

NOTIFICATION REQUIREMENTS/CONTACTS

- 1. THE 24-HOUR EMERGENCY CONTACT: MATTHEW PEPPER
PHONE: (770) 985-3502
2. OWNER: CITY OF SNELLVILLE
3. ENGINEER: PRECISION PLANNING, INC.
4. NOTIFY GCDWR INSPECTIONS OF THE FOLLOWING AT THE INDICATED TIME INTERVAL...

GENERAL NOTES

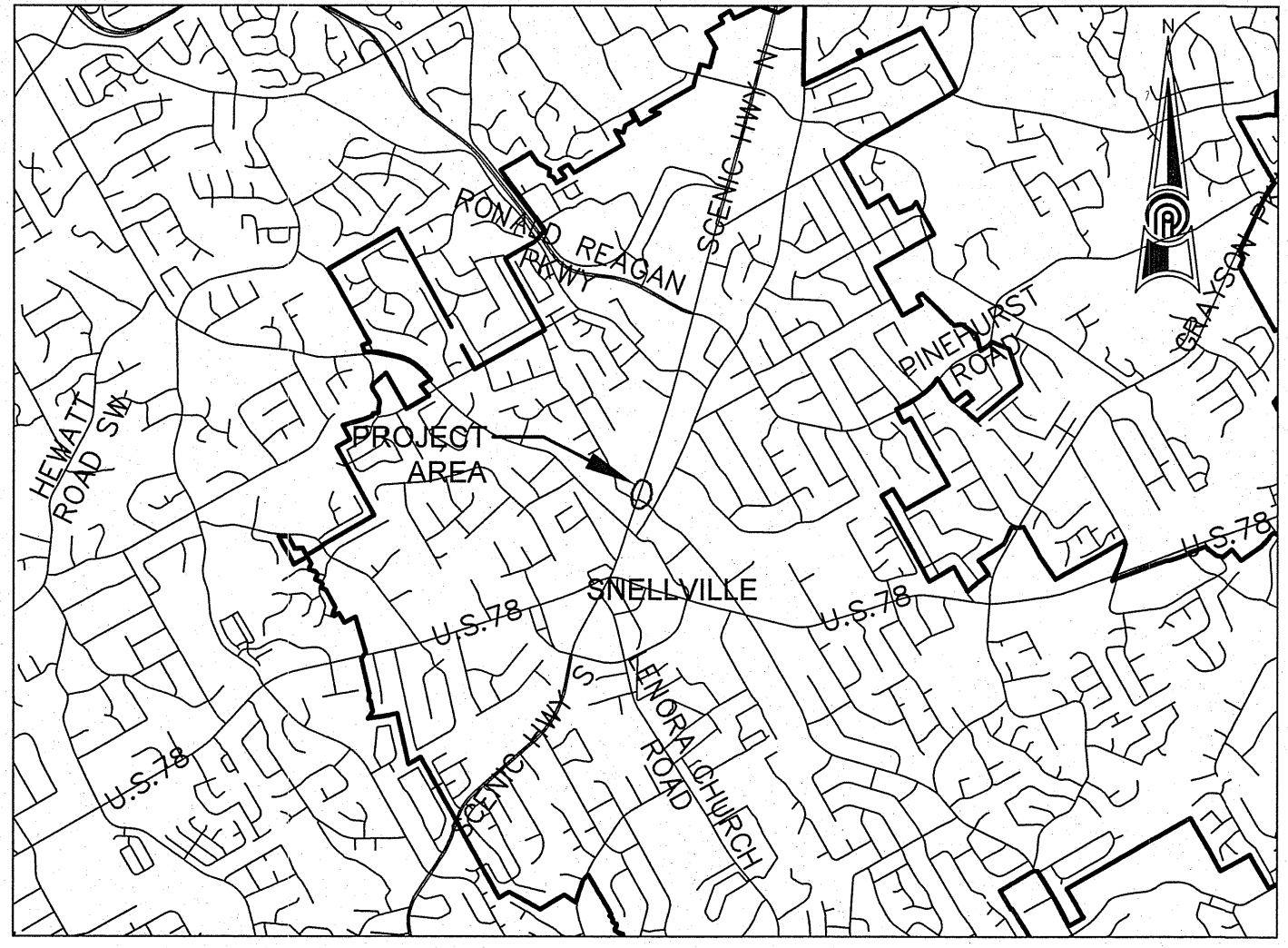
- 1. ALL CONSTRUCTION SHALL COMPLY WITH GWINNETT COUNTY DEPARTMENT OF WATER RESOURCES WATER MAIN AND SANITARY SEWER DESIGN AND CONSTRUCTION STANDARDS AND SPECIFICATIONS, LATEST VERSION.
2. ALL CONSTRUCTION SHALL COMPLY WITH THE CONTRACT PLANS, CONTRACT SPECIFICATIONS, PERMIT REQUIREMENTS...

GENERAL NOTES, CONTINUED

- 35. WHERE GROUND WATER INGRESS INTO THE TRENCH IS EXPERIENCED DURING THE PIPE LAYING EVENT, THE CONTRACTOR WILL TAKE THE NECESSARY STEPS TO DEWATER THE TRENCH.
36. NO EXISTING UTILITY SHALL BE DISTURBED WITHOUT PROPER AUTHORITY...

PROJECT SPECIFIC NOTES

- 1. PROPERTY LINES AND BACKGROUND TOPOGRAPHIC FEATURES SHOWN ON THE PLANS ARE BASED ON SURVEY BY PRECISION PLANNING, INC.
2. THE SURVEY FOR THIS PROJECT WAS PREPARED BY PRECISION PLANNING, INC. USING NAD83 GEORGIA STATE PLANE WEST AND VERTICAL DATUM NAVD83...



VICINITY MAP N.T.S.

LEGEND table with columns for EXISTING, LEGEND, and NEW symbols and descriptions for various utilities like WATER, SANITARY SEWER, SERVICE LATERAL, FORCE MAIN, GAS LINE, UNDERGROUND POWER, etc.

ABBREVIATIONS

Table of abbreviations for construction elements such as AIR RELEASE VALVE, BACK OF CURB, BENCHMARK, CATCH BASIN, etc.

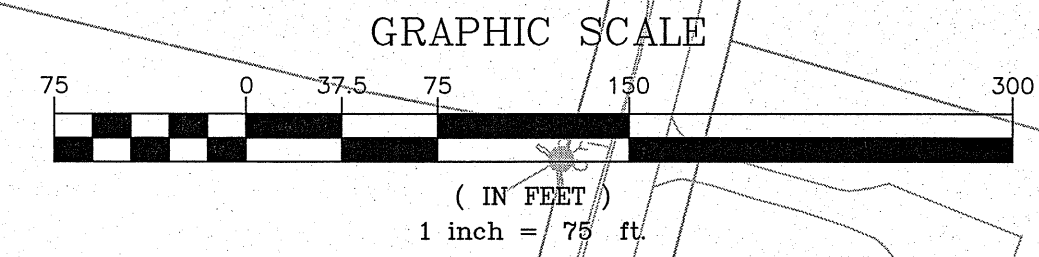
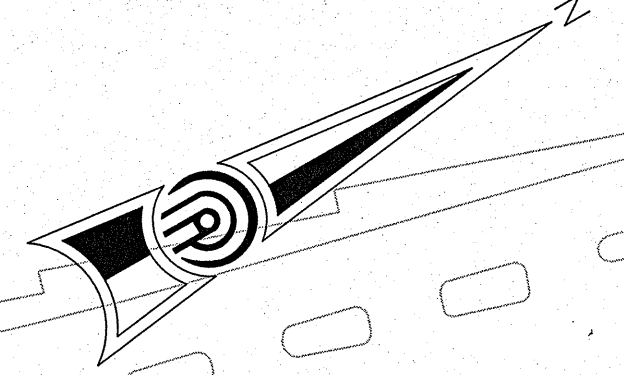
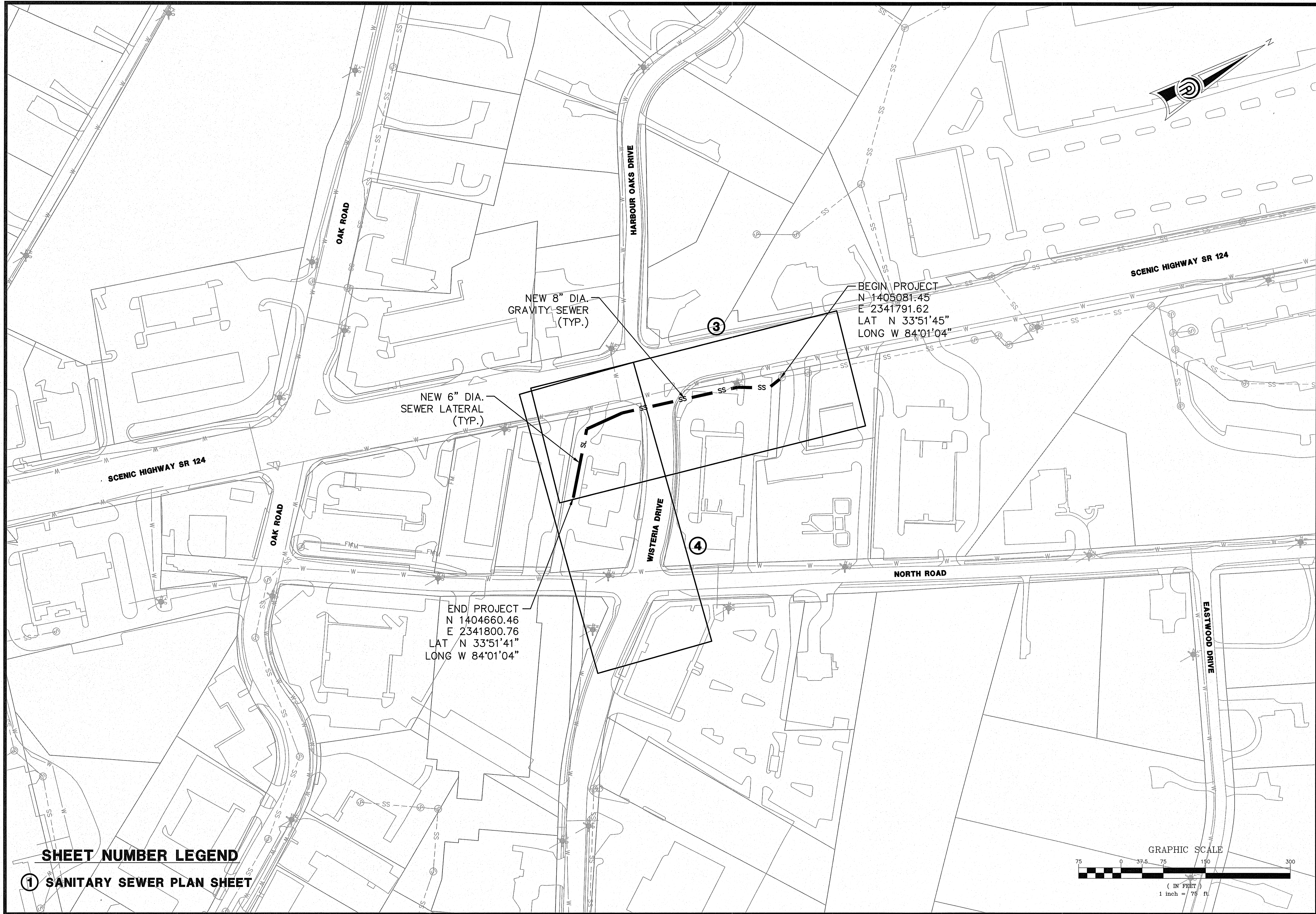


Know what's Below. Call before you dig. GWINNETT COUNTY DOT IS NOT ON THE ONE-CALL SYSTEM. CALL (770) 822-7474 WHEN LOCATING UTILITIES FOR CONSTRUCTION.

Professional Engineer seal for Richard H. Crowder, Inc. and Precision Planning Inc. logo with contact information for Georgia Engineering Firm COA # PEF000529.

PLOT DATE: 11/7/2024 10:09 AM FILE PATH: W:\PROJECTS\2024\24114-IR-SNELLVILLE UCB SEWER\DWG\24114-GENERAL NOTES & LEGEND.DWG - 2024-11-01 - DYLAN PARKER

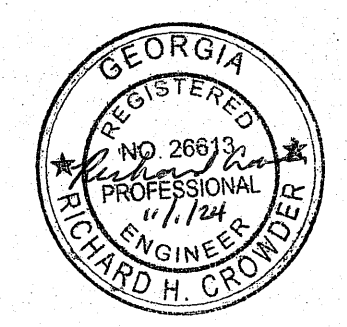
PLOT DATE: 11/7/2024 10:09 AM FILE PATH: W:\PROJECTS\2024\24114-W-SHELLEVILLE USG SEWER\DWG\24114-SHEET INDEX.DWG - 2024-11-01 - DYLAN PARKER



SHEET NUMBER LEGEND

① SANITARY SEWER PLAN SHEET

© 2024
PRECISION PLANNING, INC.
ALL RIGHTS RESERVED.
THESE CONSTRUCTION DOCUMENTS AND ANY INSTRUMENTS OF SERVICE HERETO ARE INSTRUMENTS OF SERVICE PREPARED BY OR FOR THE FIRM OF PRECISION PLANNING, INC. UNLESS OTHERWISE INDICATED OTHERWISE. THE USER OF THESE DOCUMENTS SHALL BE RESPONSIBLE FOR OBTAINING ALL NECESSARY PERMITS AND FOR THE ACCURACY OF THE INFORMATION PROVIDED HEREIN. THE USER SHALL INDEMNIFY AND HOLD PRECISION PLANNING, INC. HARMLESS FROM AND AGAINST ALL CLAIMS, DAMAGES, LOSSES AND EXPENSES, INCLUDING ATTORNEY'S FEES, ARISING OUT OF OR RESULTING FROM THE USE OF THESE DOCUMENTS.



STAMP

PRECISION
Planning Inc.

planners • engineers • architects • surveyors

Georgia Engineering Firm COA # PEEF000529
400 Pike Boulevard, Lawrenceville, GA 30046
770.338.8000 • www.ppi.us

GRAVITY SEWER EXTENSION
TO PARCEL 5026 038

SHEET INDEX	
DESIGN	RC
DRAWN	DP
CHECKED	RC

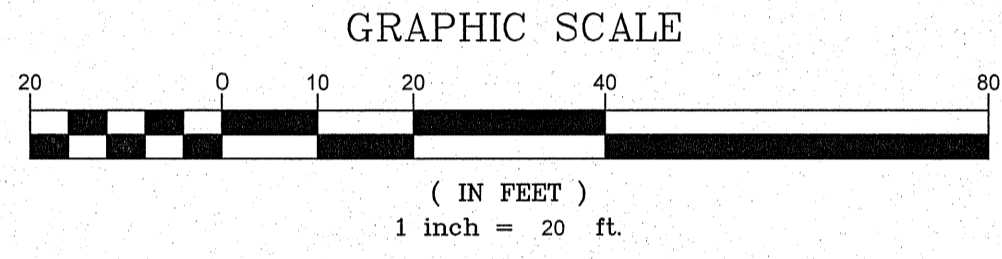
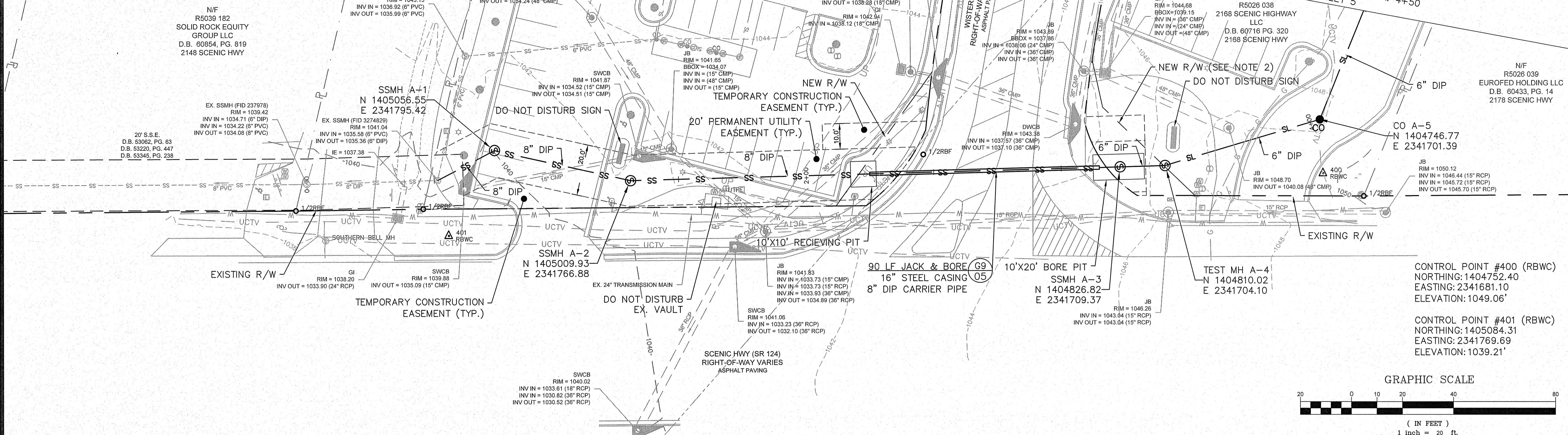
DATE	NO.	DESCRIPTION
11/01/24	0	ISSUED FOR BID

E24114
PPI PROJECT NO.

03

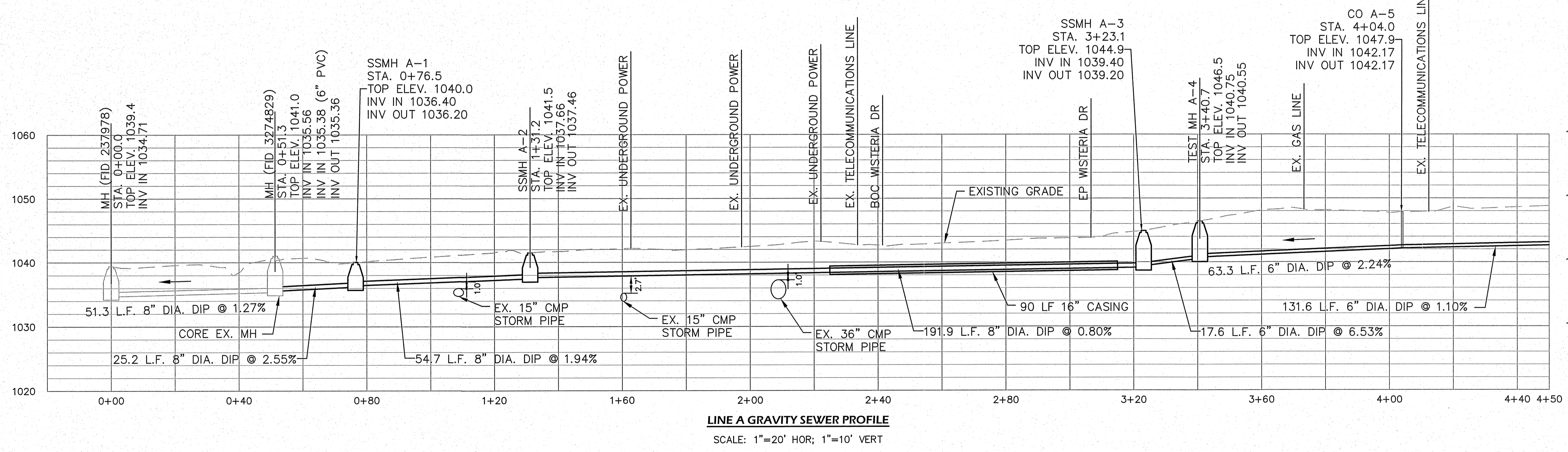
RELEASE

- NOTES:
- SEE SHEET 2 FOR GENERAL NOTES & LEGEND.
 - GDOT NEW R/W PER PLANS TITLED SR 124/SCENIC HWY@ WISTERIA DR INTERSECTION IMPROVEMENTS DATED 03/15/21.
 - CONTRACTOR TO SEQUENCE WORK AND USE STEEL PLATES TO MAINTAIN DRIVEWAY ACCESS DURING CONSTRUCTION.



CONTROL POINT #400 (RBWC)
 NORTHING: 1404752.40
 EASTING: 2341681.10
 ELEVATION: 1049.06'

CONTROL POINT #401 (RBWC)
 NORTHING: 1405084.31
 EASTING: 2341769.69
 ELEVATION: 1039.21'



PLOT DATE: 11/7/2024 10:59 AM FILE PATH: W:\PROJECTS\2024\24114-WR-SHELLEVILLE UGB SEWER\DWG\24114-BASE DESIGN.DWG - 2024-11-01 - DYLAN PARKER

PRECISION Planning Inc.
 REGISTERED PROFESSIONAL ENGINEER
 NO. 25813
 RICHARD H. CROPPER

planners • engineers • architects • surveyors
 Georgia Engineering Firm COA # PEF000529
 400 Pike Boulevard, Lawrenceville, GA 30046
 770.338.6800 • www.ppi.us

GRAVITY SEWER EXTENSION
 TO PARCEL 5026 038

SANITARY SEWER PLAN & PROFILE

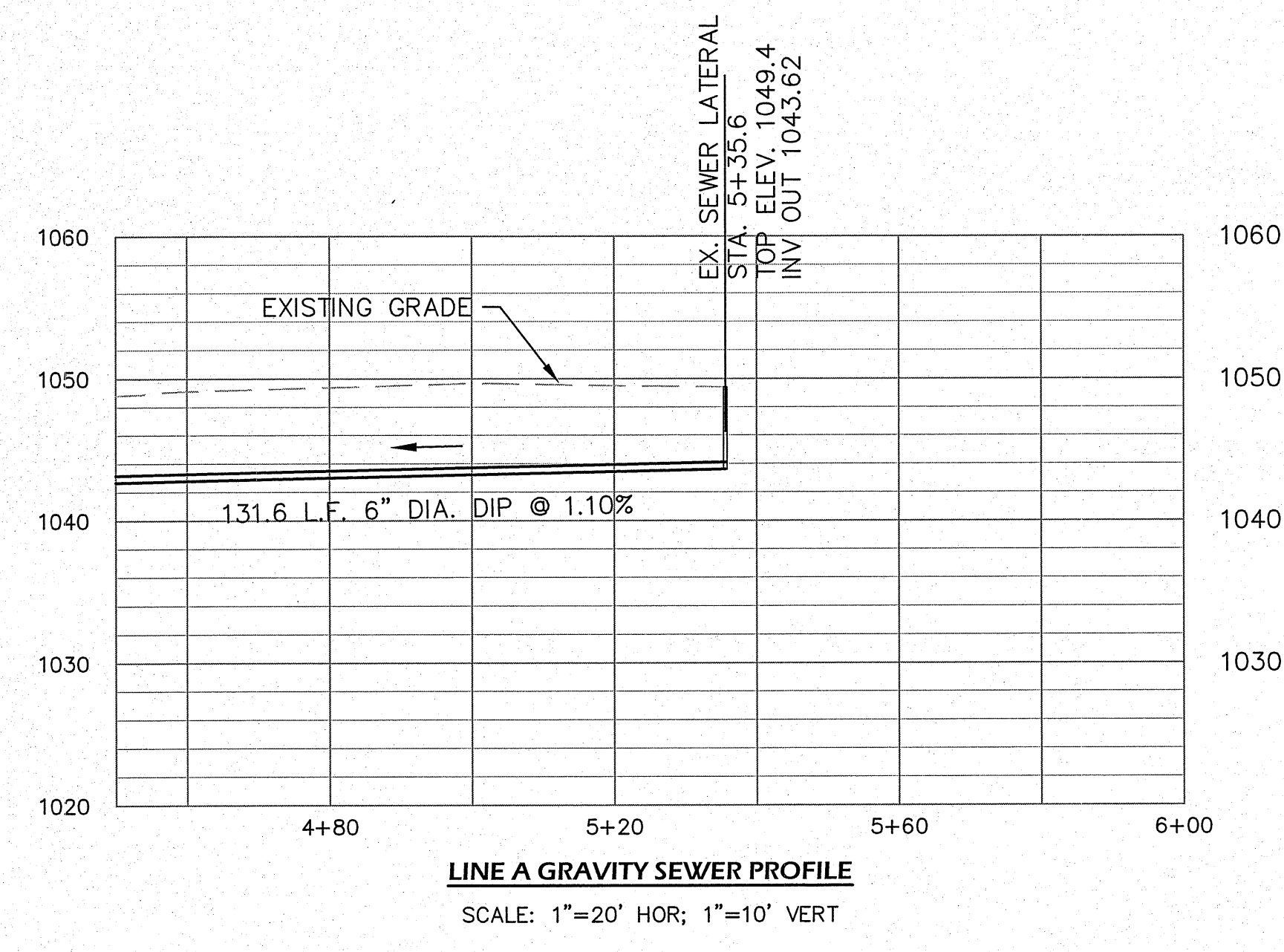
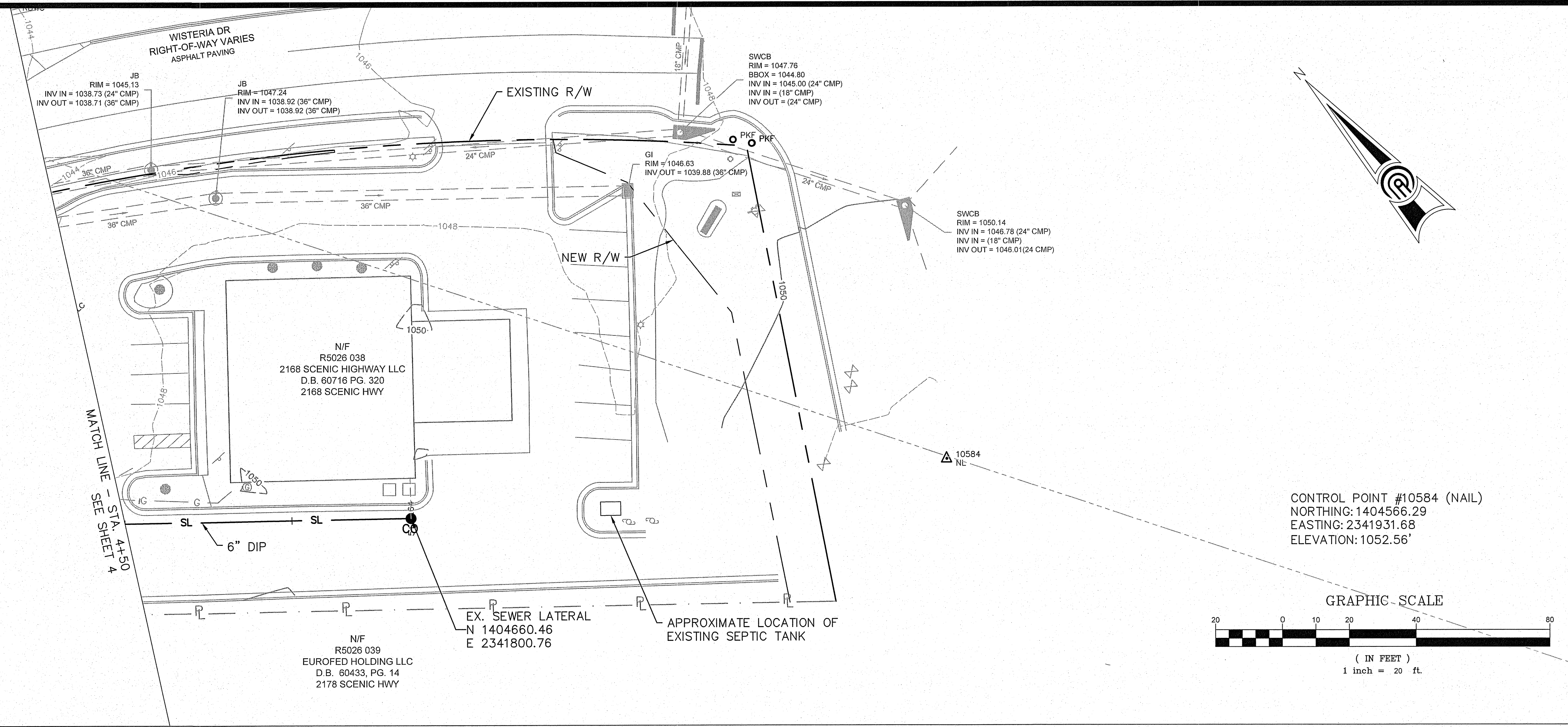
DESIGN	RC
DRAWN	DP
CHECKED	RC

DATE	NO.	DESCRIPTION
11/01/24	0	ISSUED FOR BID

E24114
 PPI PROJECT NO.

04

- NOTES:**
- SEE SHEET 2 FOR GENERAL NOTES & LEGEND.
 - LOCATION OF EXISTING SEWER LATERAL SHOWN IS APPROXIMATE. CONTRACTOR TO FIELD LOCATE AND CONNECT TO EXISTING SEWER LEAVING THE BUILDING.
 - CONTRACTOR TO SEQUENCE WORK AND USE STEEL PLATES TO MAINTAIN DRIVEWAY ACCESS DURING CONSTRUCTION.



PLOT DATE: 11/1/2024 10:56 AM FILE PATH: W:\PROJECTS\2024\24114-WR-SHELLEVILLE\CB-SEWER\DWG\24114-BASE DESIGN.DWG - 2024-11-01 - DYLAN PARKER

© 2024 PRECISION PLANNING, INC. ALL RIGHTS RESERVED.

THESE CONSTRUCTION DOCUMENTS AND ANY INSTRUMENTS OF SERVICE HERETO, ARE INSTRUMENTS OF PRECISION PLANNING, INC. UNDER THE PROFESSIONAL SEAL OF RICHARD H. CROWTHER, ENGINEER. ANY REPRODUCTION OR COPIES OF ANY PART OF THESE DOCUMENTS WITHOUT THE WRITTEN PERMISSION FROM PRECISION PLANNING, INC. IS PROHIBITED.

STAMP

PRECISION
Planning Inc.

planners • engineers • architects • surveyors

Georgia Engineering Firm COA # PEF000529
400 Pile Boulevard, Lawrenceville, GA 30046
770.336.0600 • www.ppi.us

**GRAVITY SEWER EXTENSION
TO PARCEL 5026 038**

**SANITARY SEWER
PLAN & PROFILE**

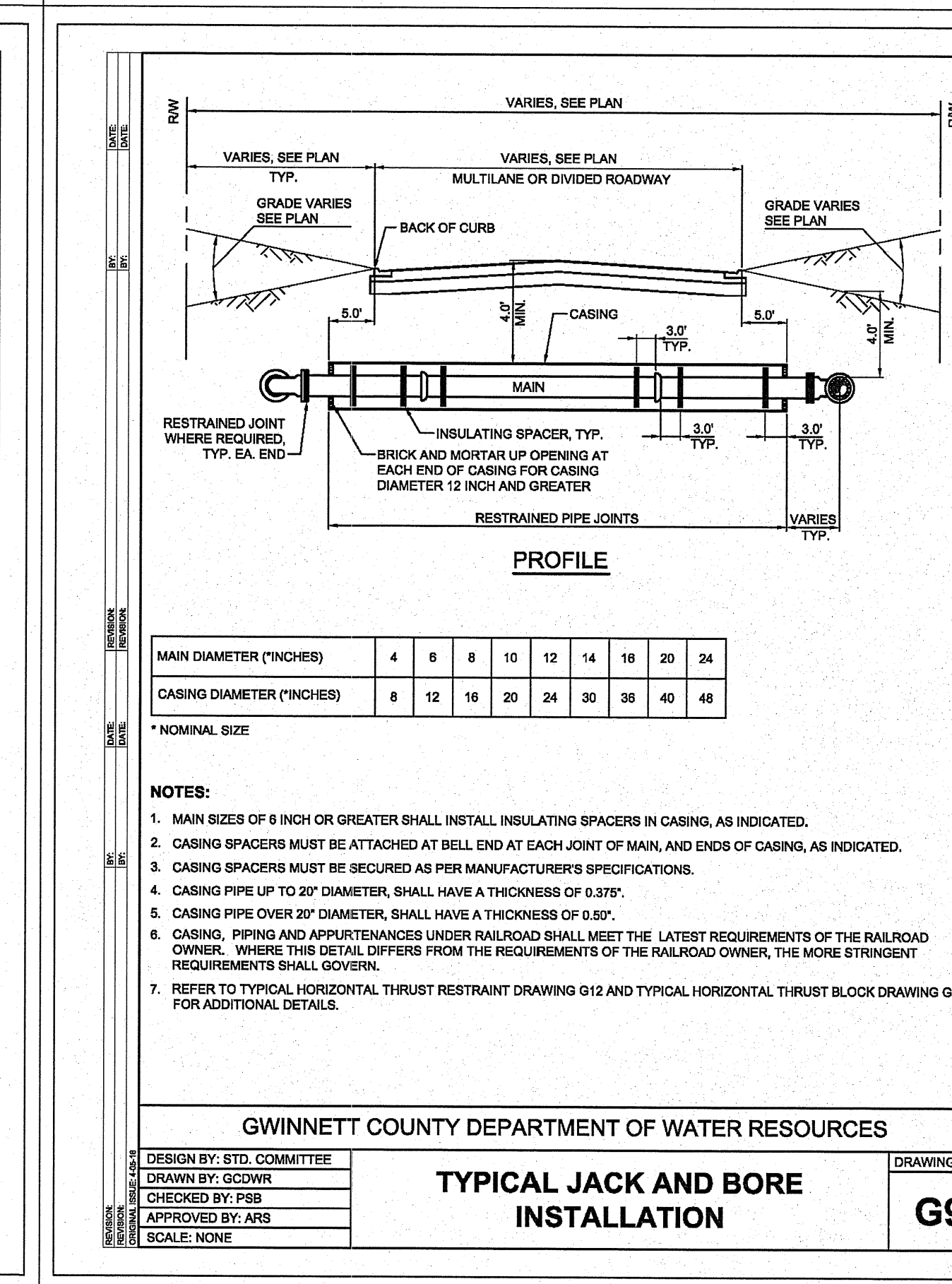
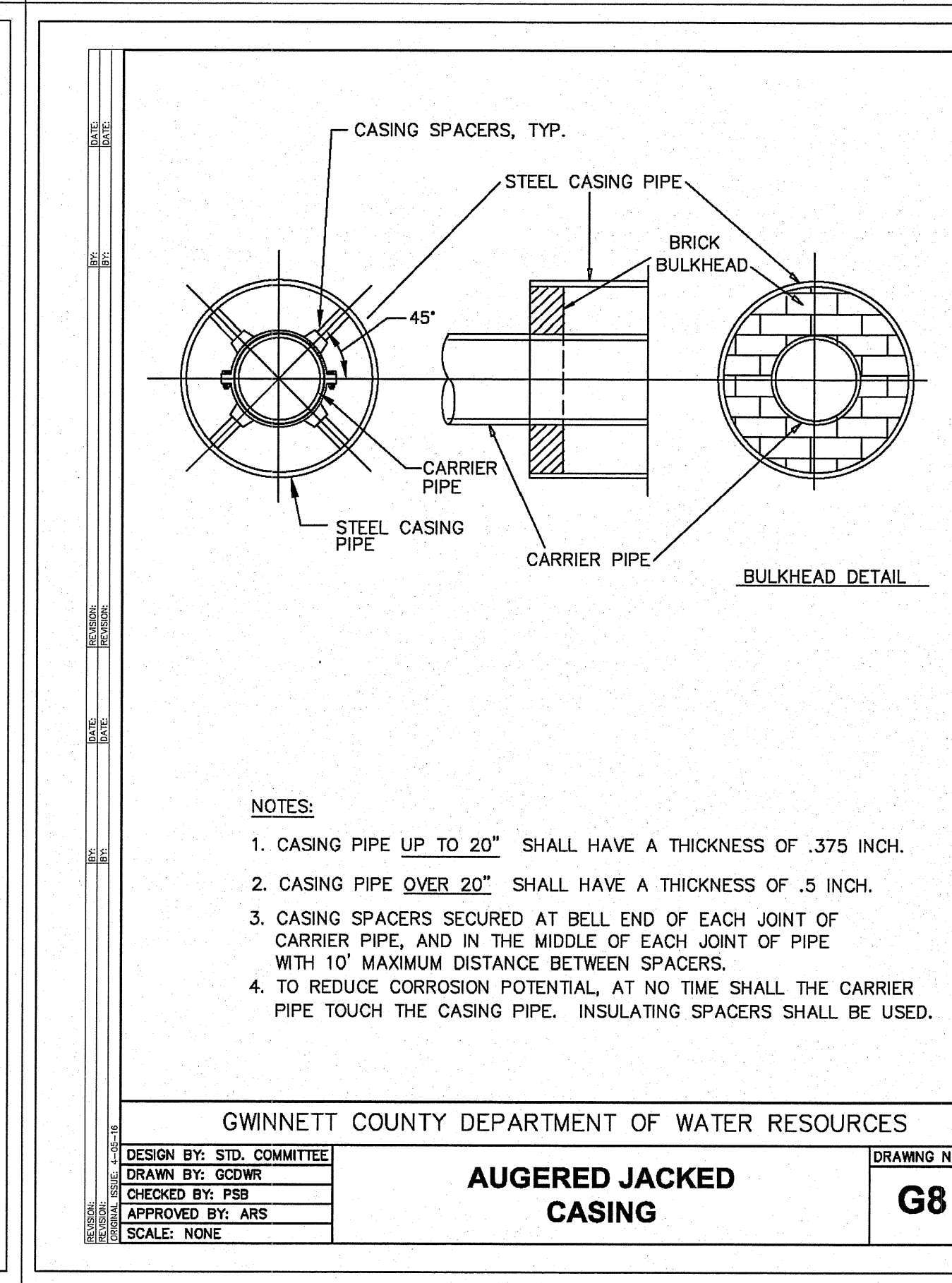
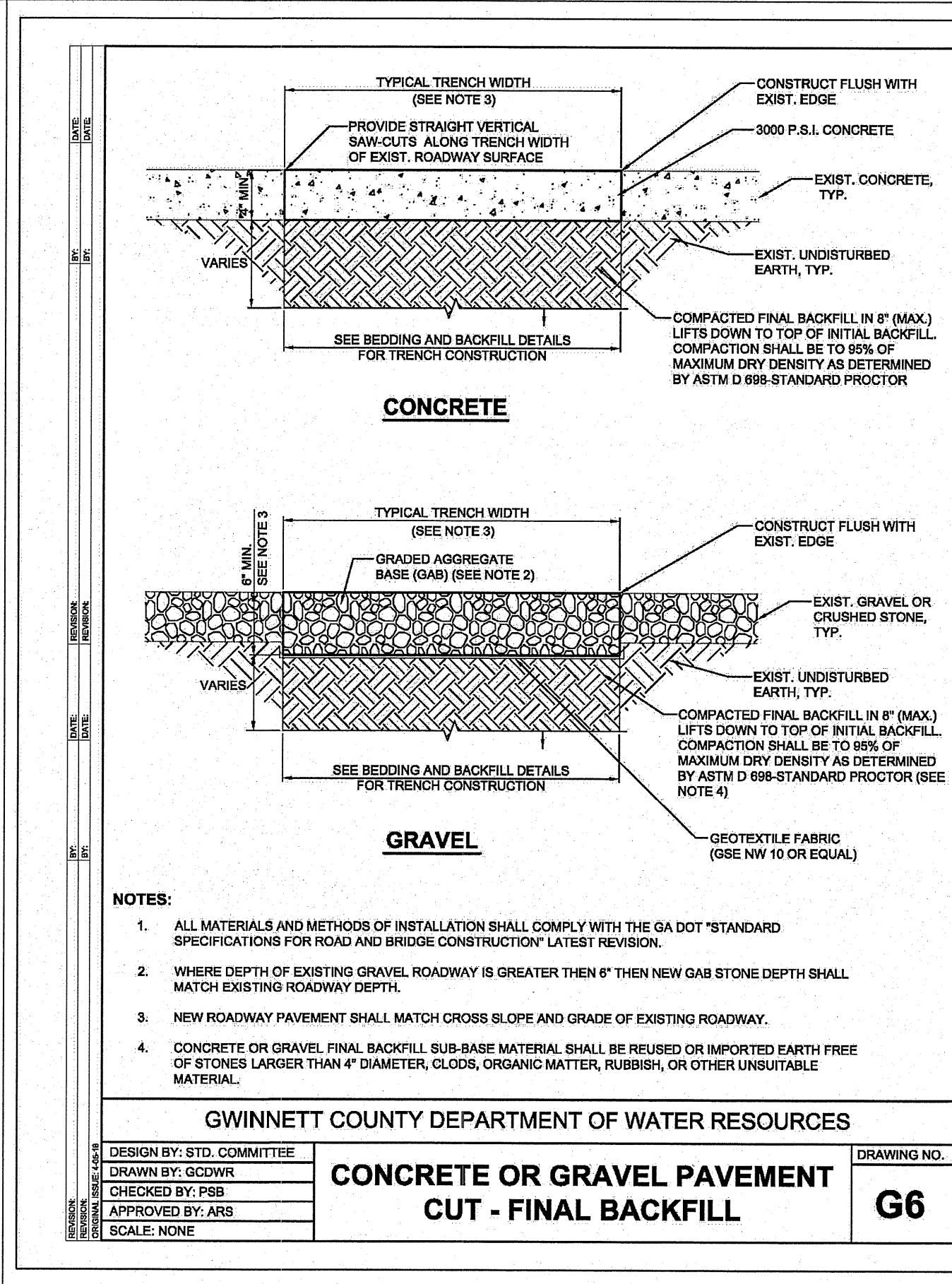
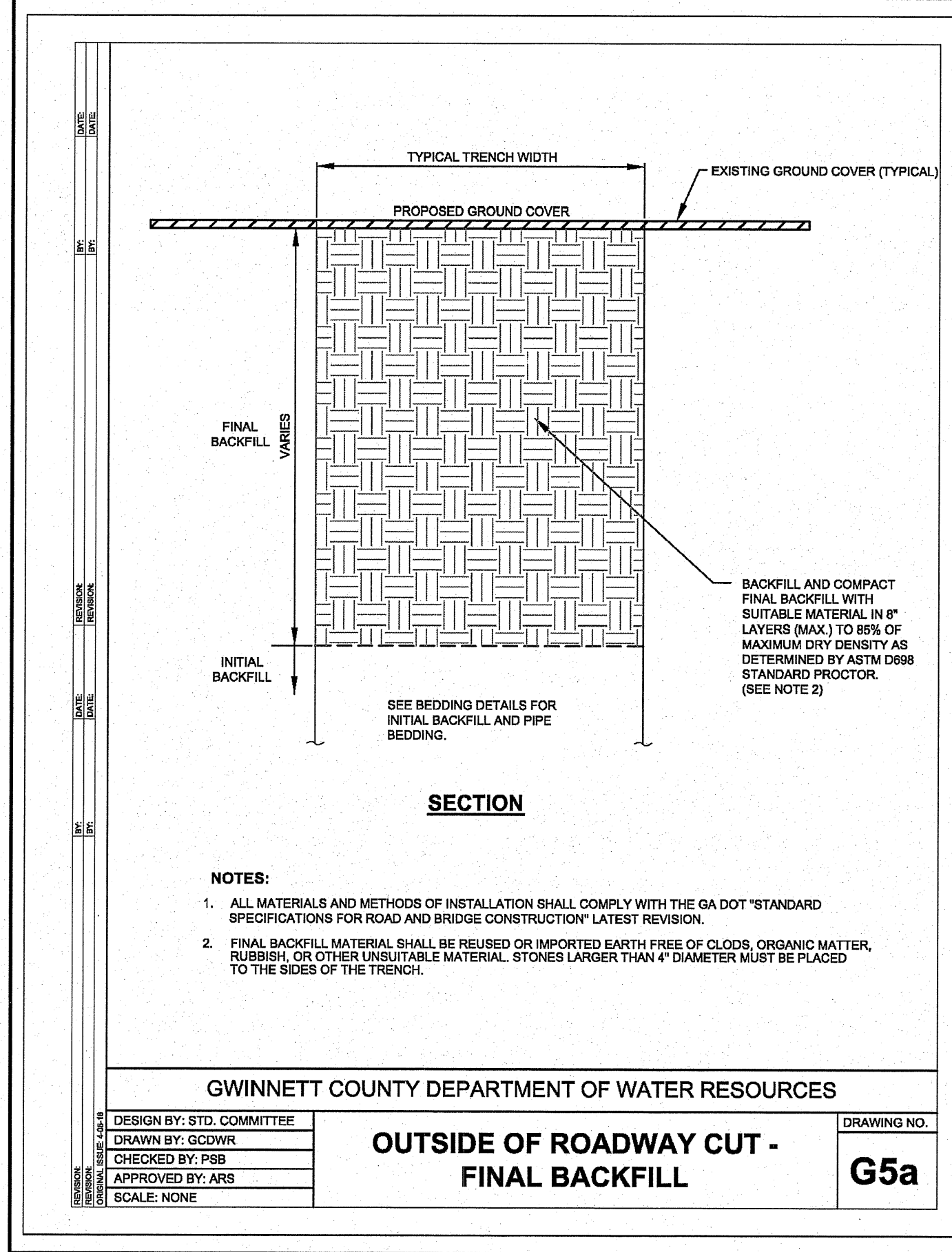
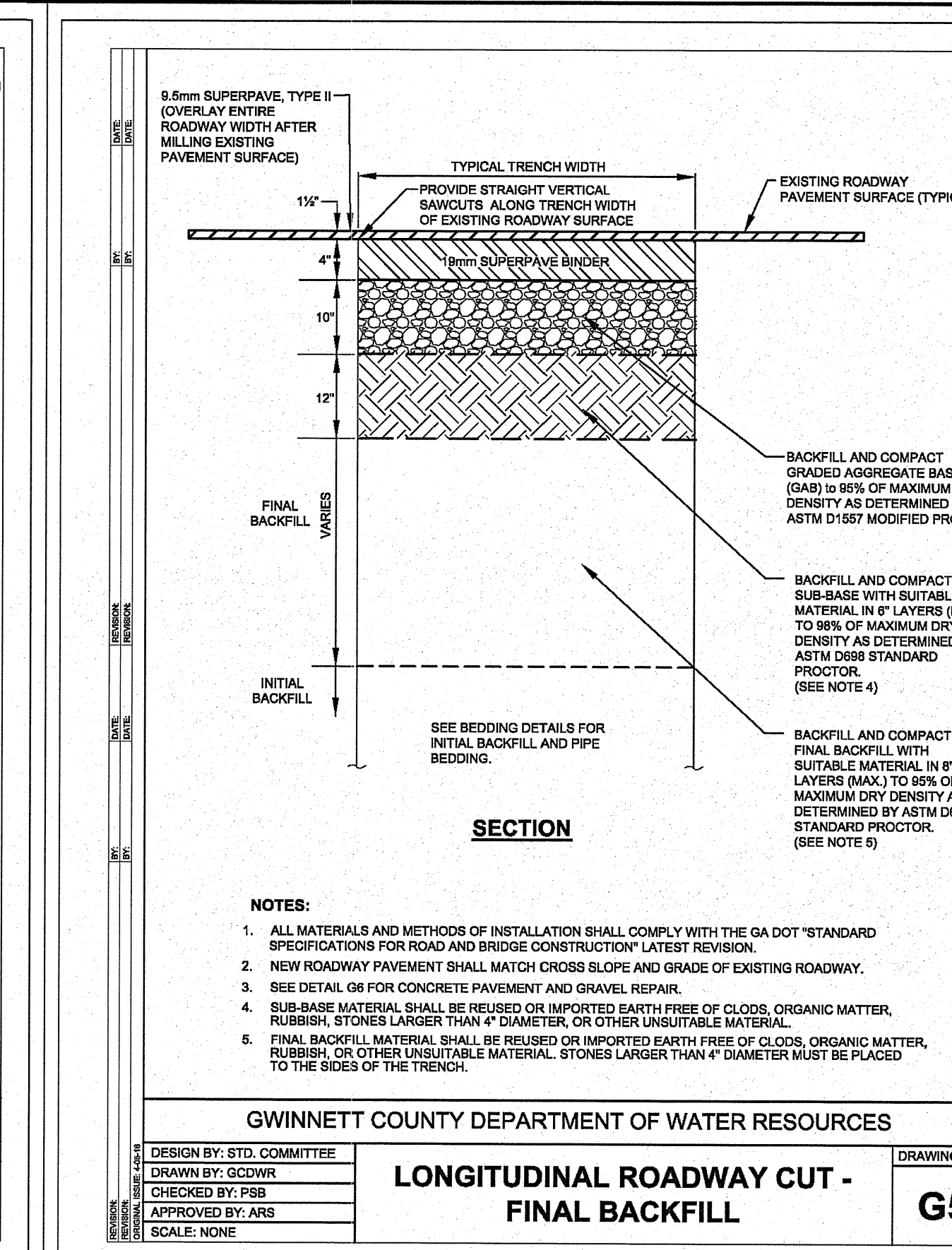
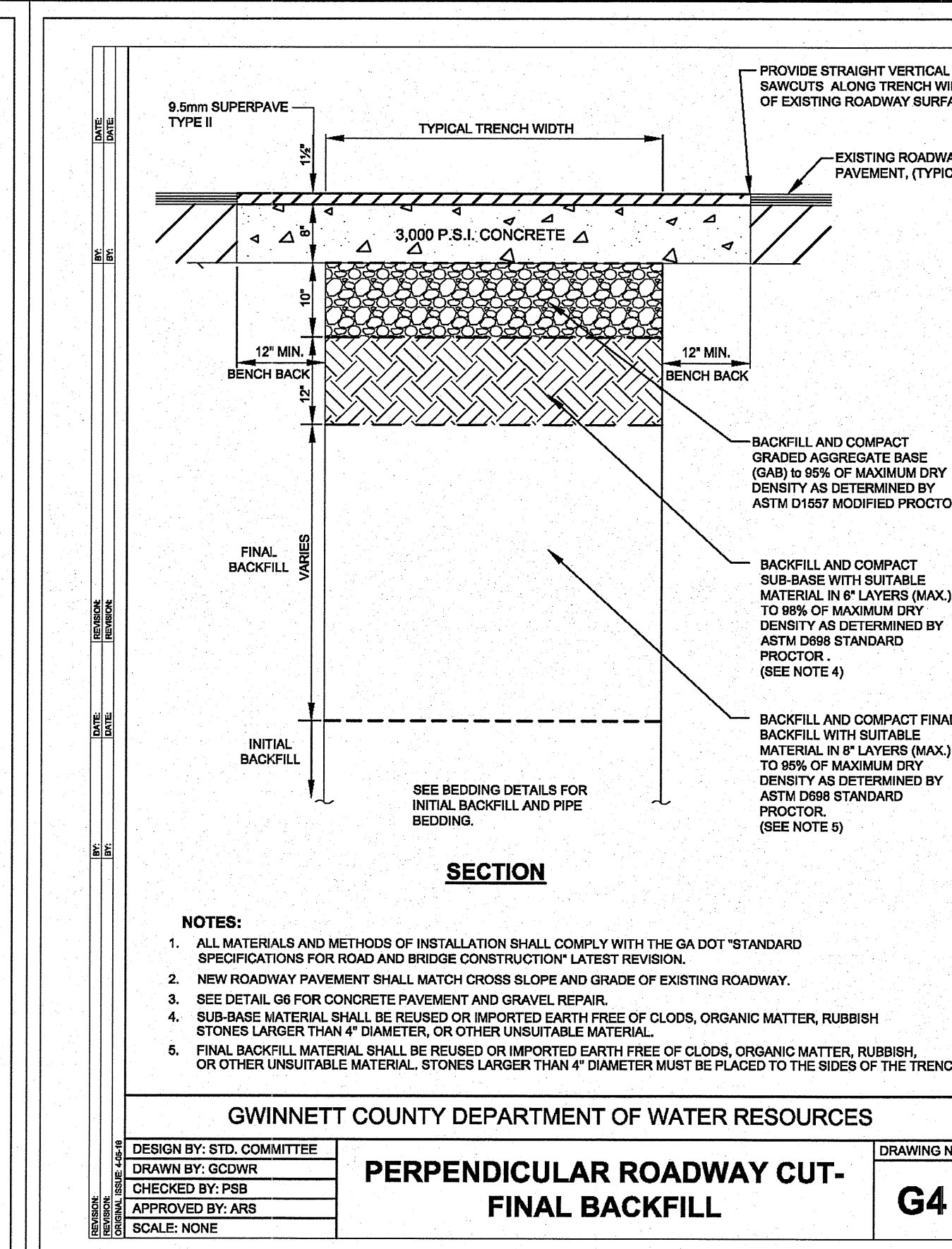
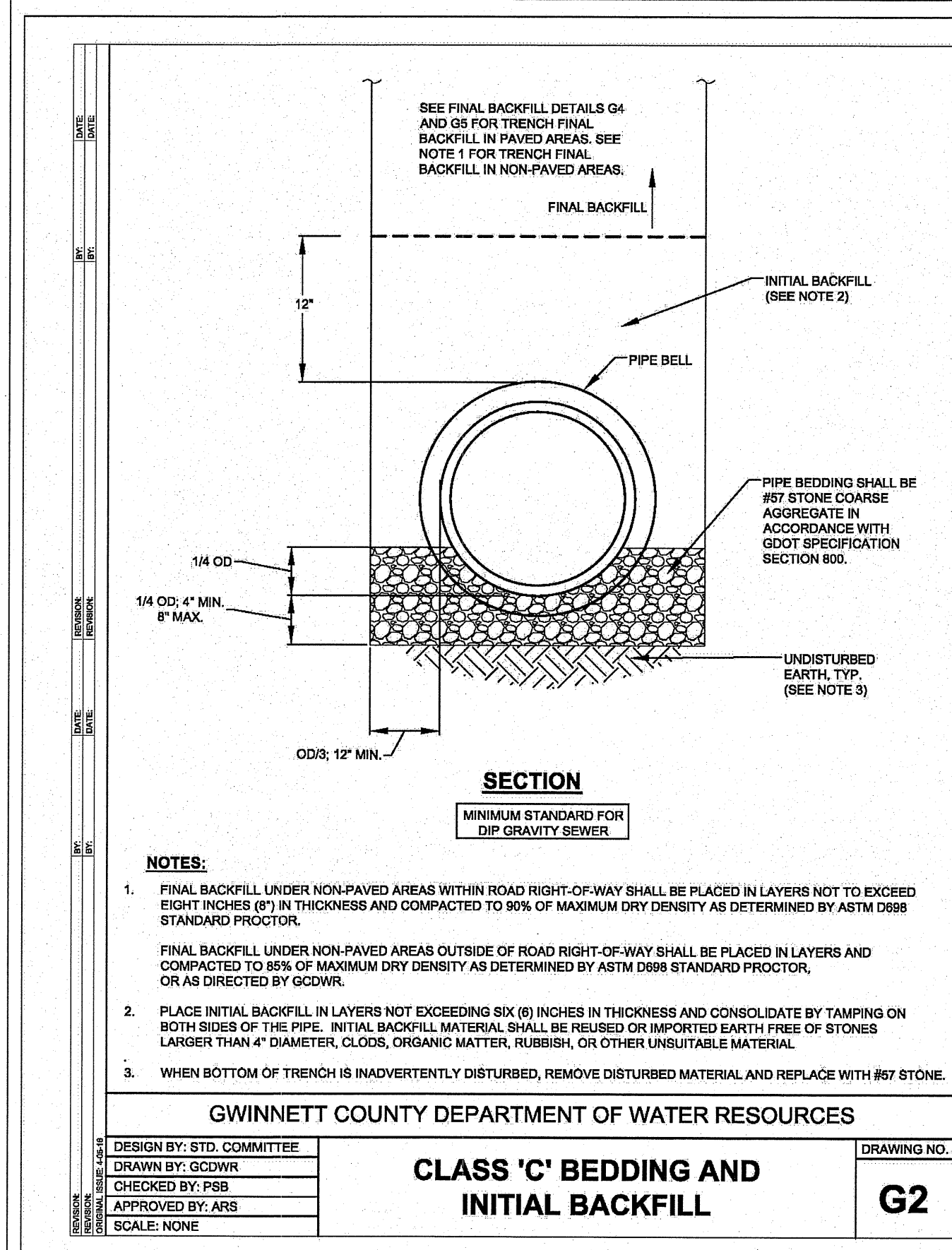
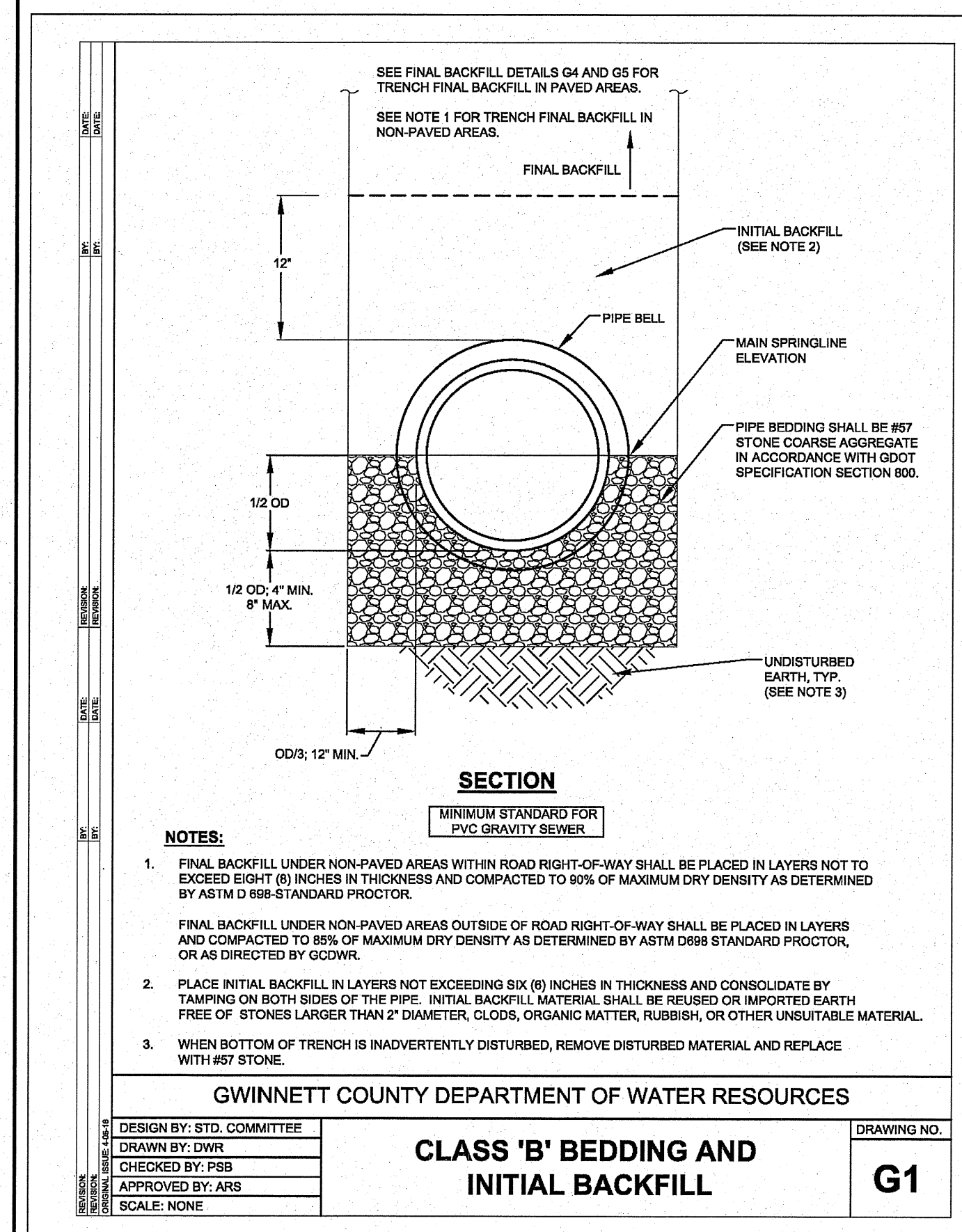
SHEET TITLE		CHECKED
DESIGN	RC	DP
DRAWN	RC	RC

DATE	NO.	DESCRIPTION
11/01/24	0	ISSUED FOR BID

E24114
PPI PROJECT NO.

05

FILE PATH: W:\PROJECTS\2024\24114-WR-SNELLVILLE USB SEWER\DWG\24114-DETAILS.DWG - 2024-11-01 - DYLAN PARKER
 PLOT DATE: 11/7/2024 10:09 AM



PRECISION PLANNING, INC.
 ALL RIGHTS RESERVED.

THESE CONSTRUCTION DOCUMENTS AND ANY INSTRUMENTS OF SERVICE ARE THE SOLE PROPERTY OF PRECISION PLANNING, INC. AND ARE TO BE USED ONLY FOR THE PROJECT AND SITE SPECIFICALLY INDICATED HEREON. ANY REUSE OR REPRODUCTION OF THESE DOCUMENTS WITHOUT THE WRITTEN CONSENT OF PRECISION PLANNING, INC. IS STRICTLY PROHIBITED.

REGISTERED PROFESSIONAL ENGINEER
 NO. 26613
 RICHARD H. CROWNER

PRECISION
 Planning Inc.
 planners • engineers • architects • surveyors

Georgia Engineering Firm COA # PEP000529
 400 Pike Boulevard, Lawrenceville, GA 30046
 770.338.8000 • www.ppi.us

STAMP

GRAVITY SEWER EXTENSION TO PARCEL 5026 038

CONSTRUCTION DETAILS

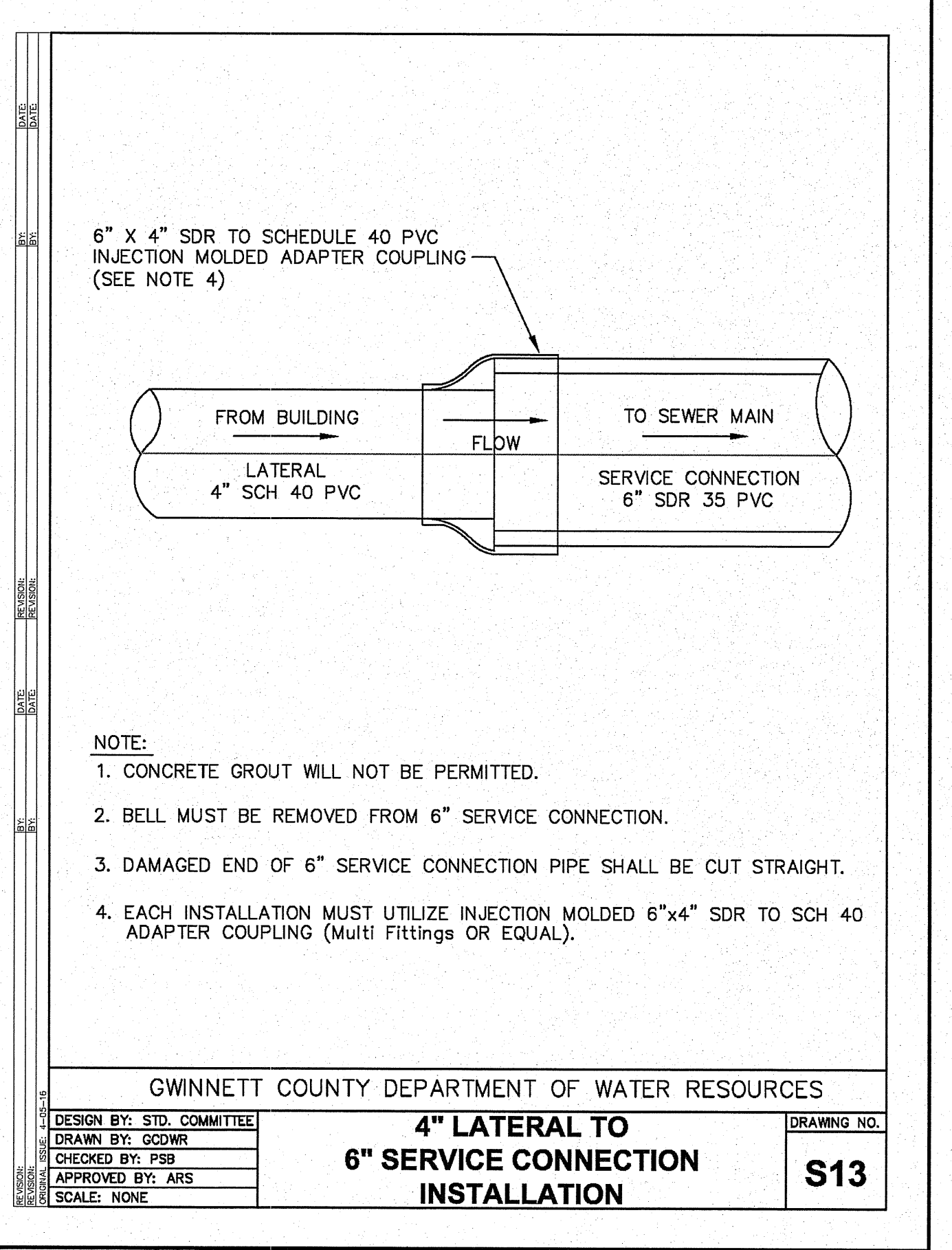
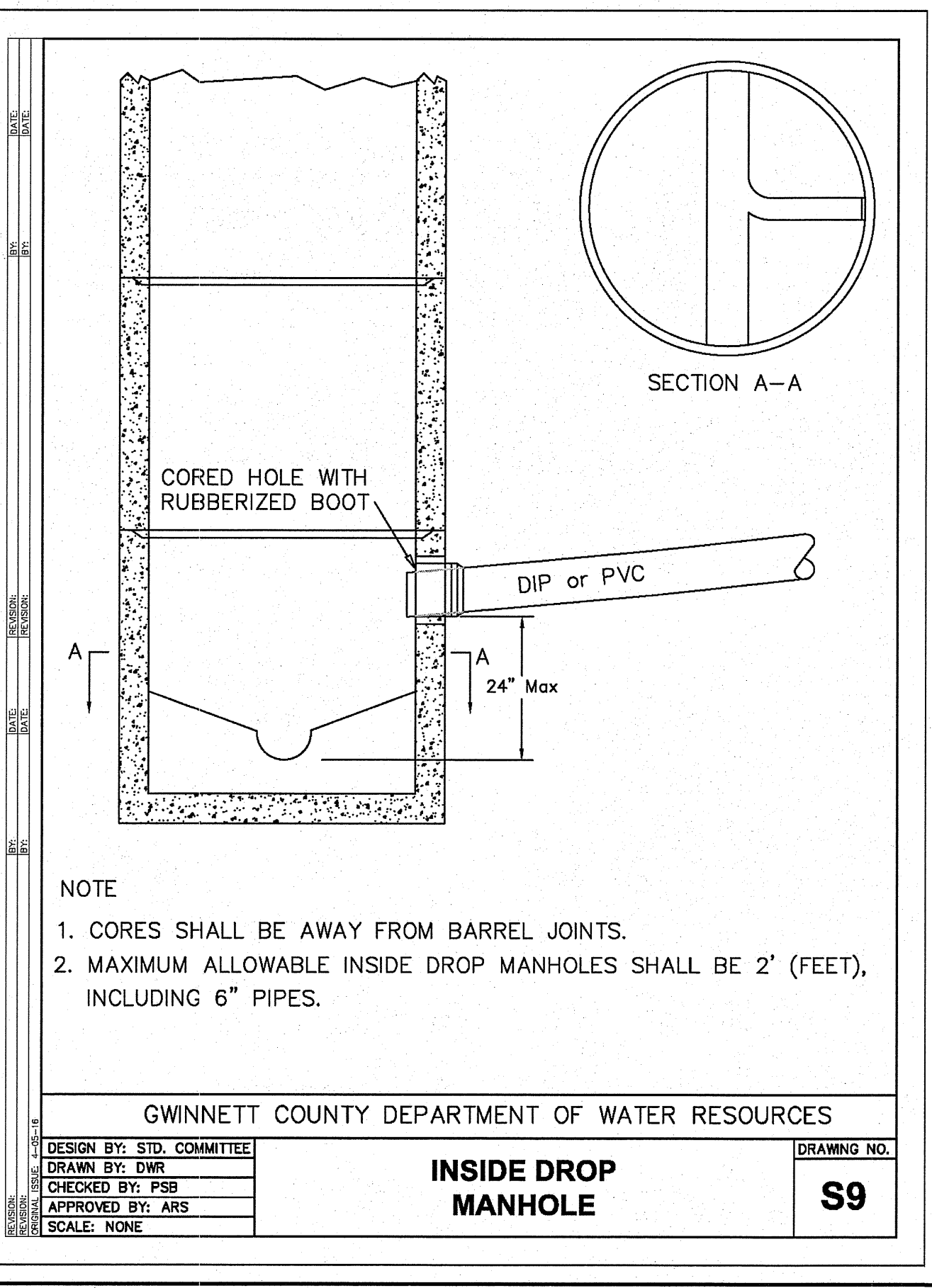
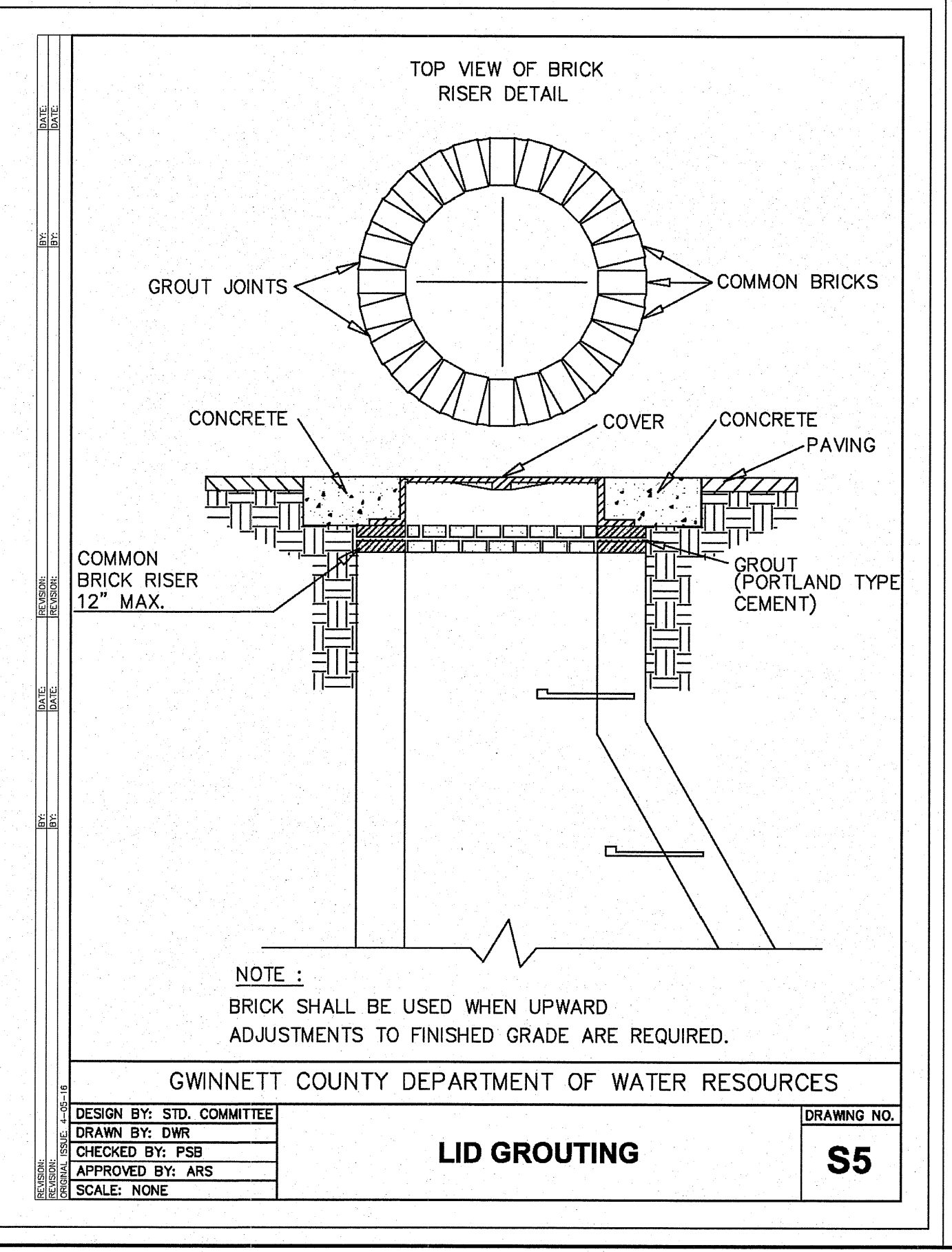
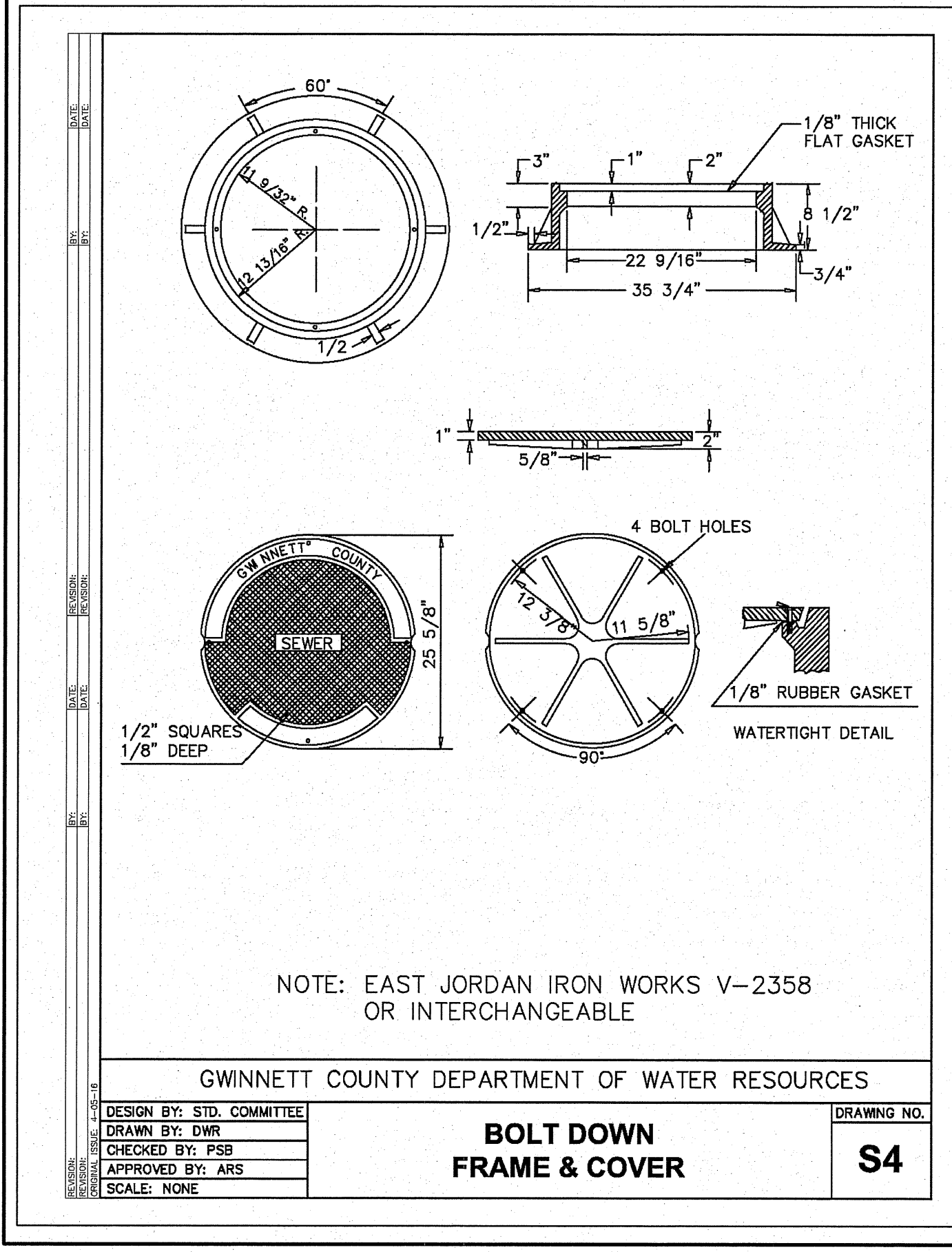
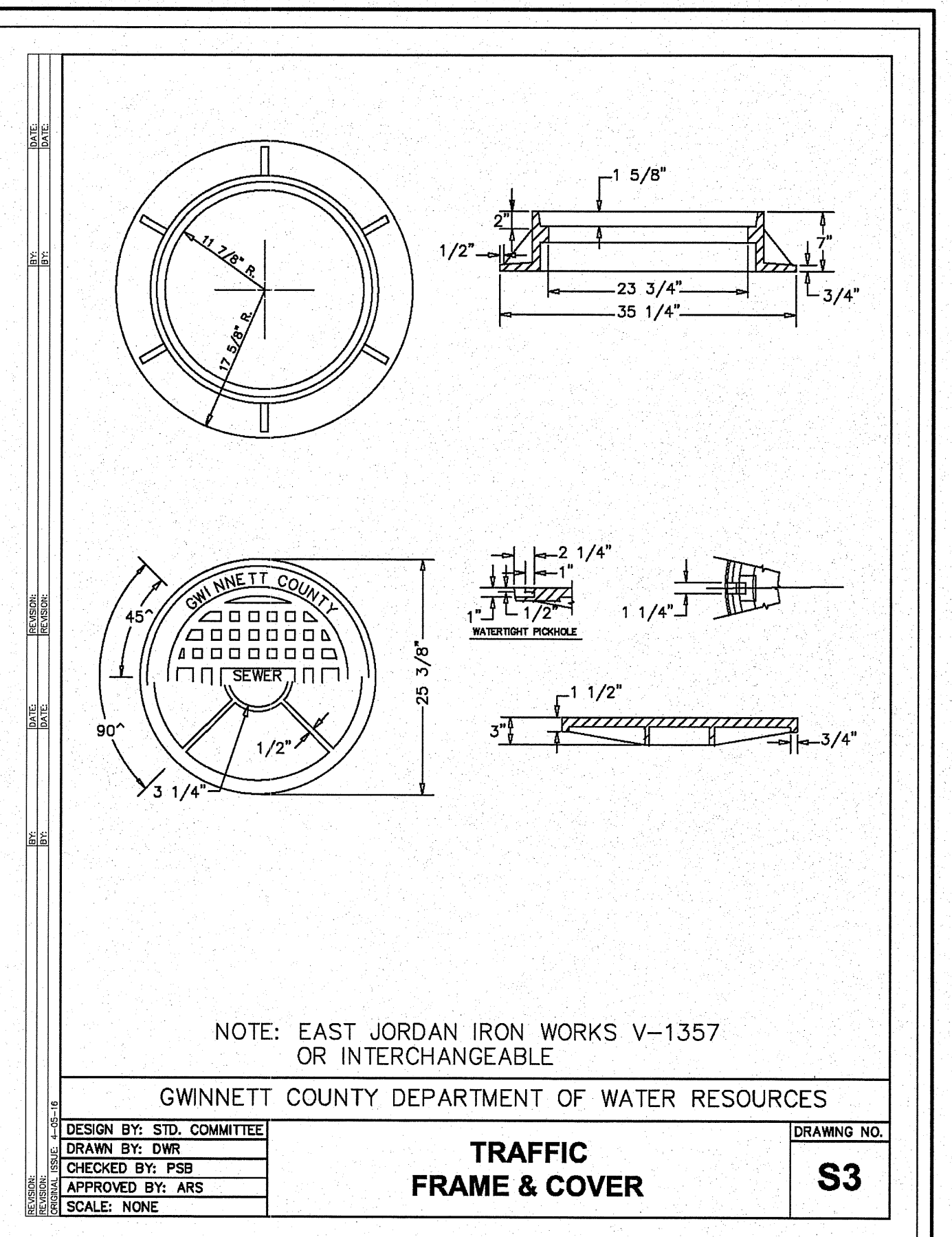
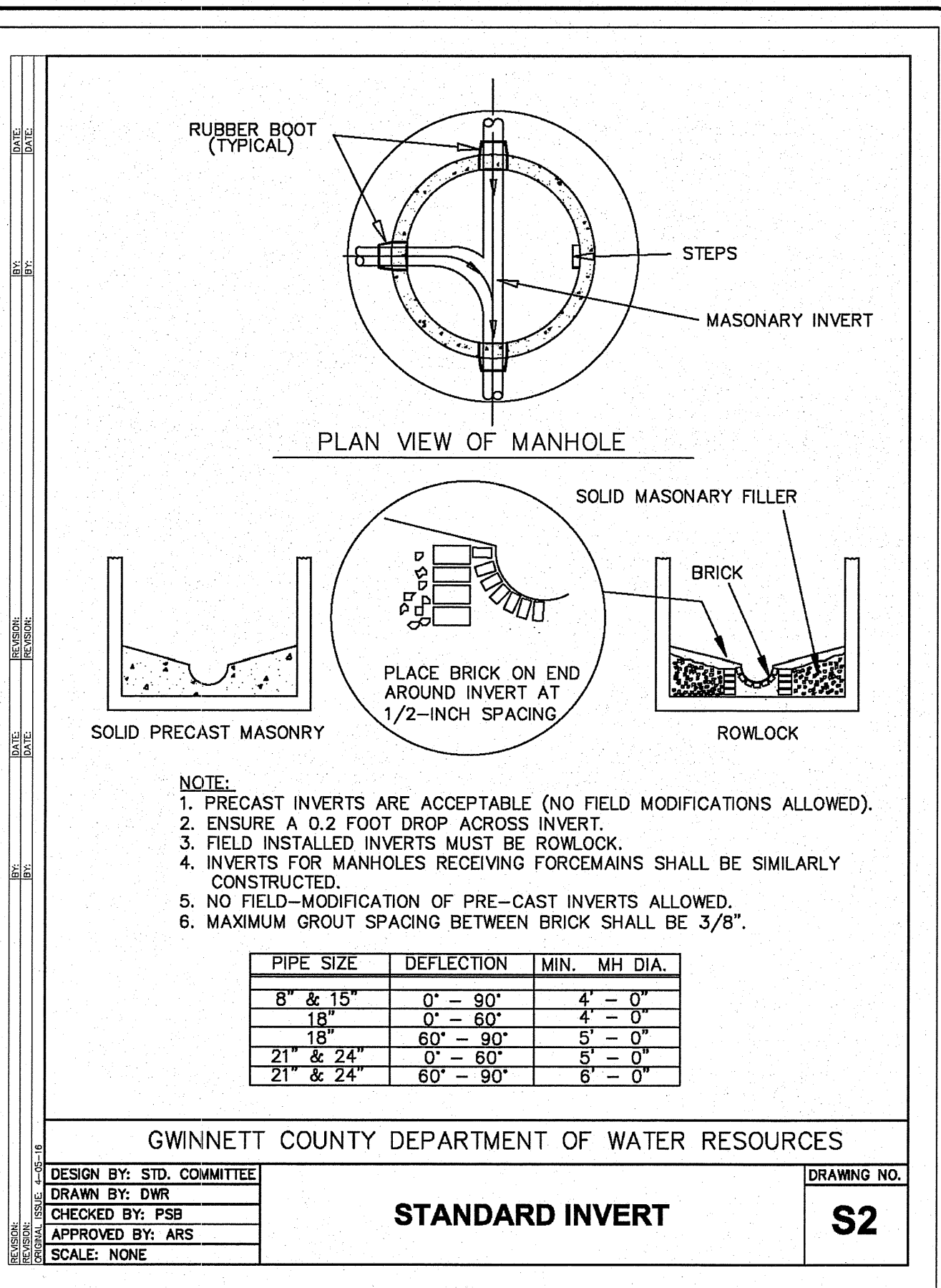
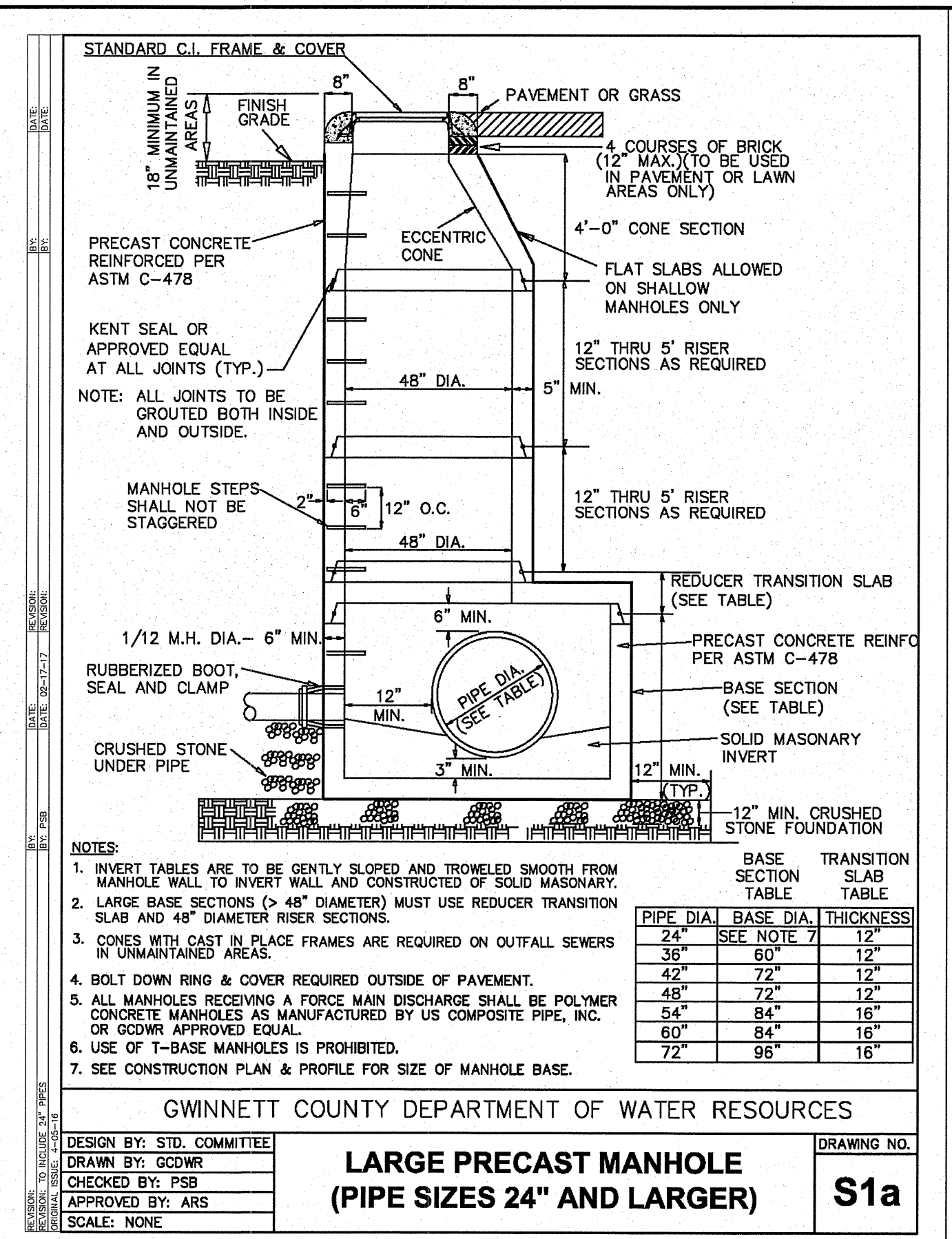
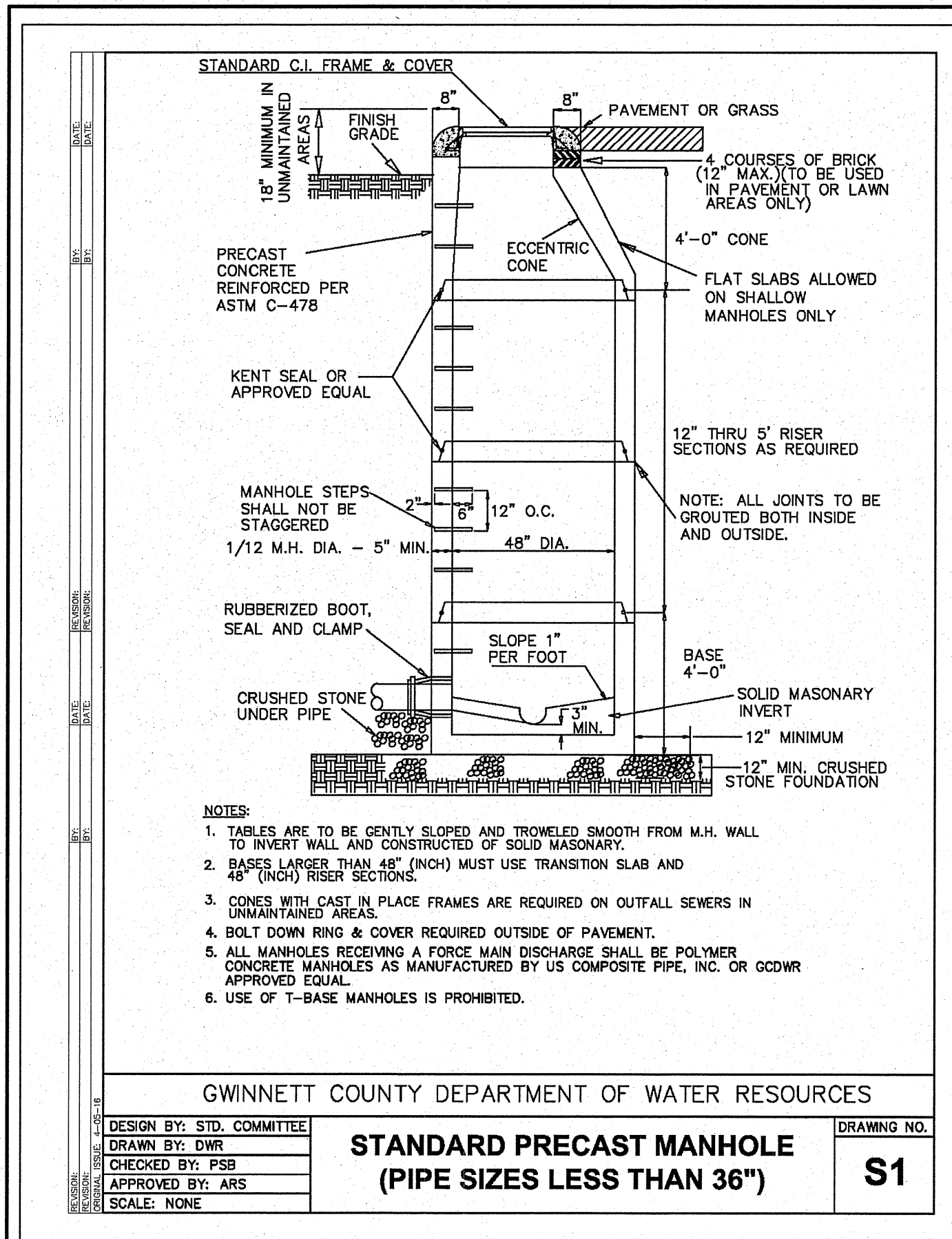
DATE	NO.	DESCRIPTION	SHEET TITLE			
			DESIGN	DRAWN	CHECKED	RC
11/07/24	0	ISSUED FOR BID	RC	DP	RC	RC

RELEASE

E24114
 PPI PROJECT NO.

06

PLOT DATE: 11/7/2024 10:09 AM FILE PATH: W:\PROJECTS\2024\24114-MR-SNELVILLE UGB SEWER\DWG\24114_DETAILS.DWG - 2024-11-01 - DYLAN PARRER



© 2024 PRECISION PLANNING, INC. ALL RIGHTS RESERVED.

THESE CONSTRUCTION DOCUMENTS AND THE INFORMATION CONTAINED HEREIN ARE THE PROPERTY OF PRECISION PLANNING, INC. UNLESS OTHERWISE INDICATED. NO PART OF THESE DOCUMENTS IS TO BE REPRODUCED OR TRANSMITTED IN ANY FORM OR BY ANY MEANS, ELECTRONIC OR MECHANICAL, INCLUDING PHOTOCOPYING, RECORDING, OR BY ANY INFORMATION STORAGE AND RETRIEVAL SYSTEM, WITHOUT THE WRITTEN PERMISSION OF PRECISION PLANNING, INC.

REGISTERED PROFESSIONAL ENGINEER
NO. 28613
RICHARD H. CROWDER
11/1/24

PRECISION
Planning Inc.
planners • engineers • architects • surveyors

Georgia Engineering Firm COA # PEP000529
400 Pike Boulevard, Lawrenceville, GA 30046
770.338.8000 • www.ppi.us

STAMP

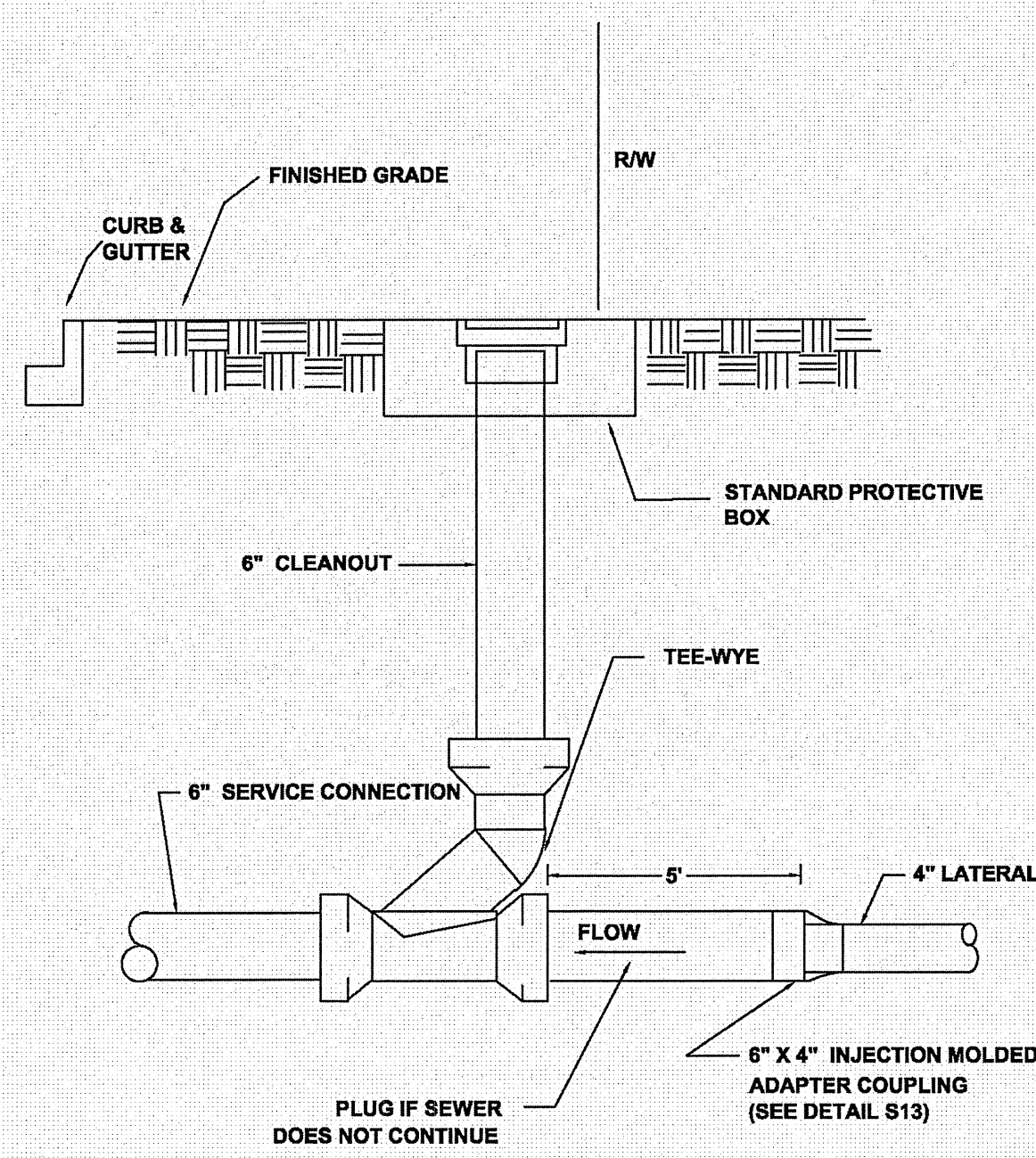
**GRAVITY SEWER EXTENSION
TO PARCEL 5026 038**

DATE	NO.	DESCRIPTION	SHEET TITLE			
			DESIGN	DRAWN	CHECKED	RC
11/01/24	0	ISSUED FOR BID	RC	DP	RC	RC

RELEASE

E24114
PPI PROJECT NO.

PLT DATE: 11/1/2024 10:10 AM FILE PATH: W:\PROJECTS\2024\24114-WR-SNELVILLE UGB SEWER\DWG\24114_DETALS.DWG - 2024-11-01 - DYLAN PARKER

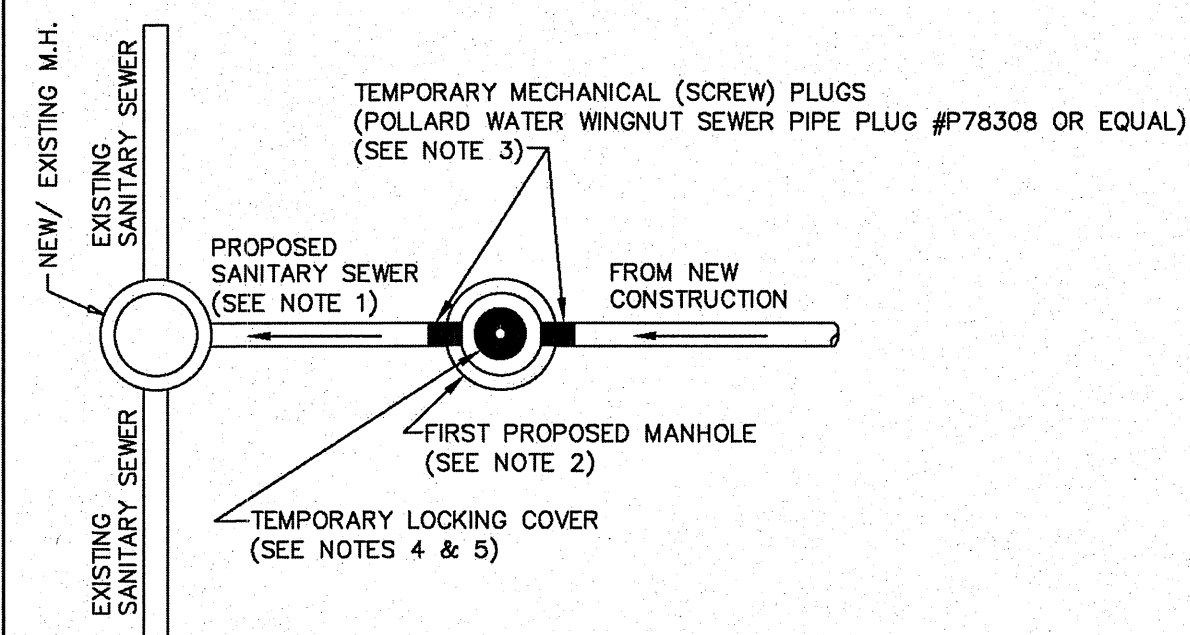


GWINNETT COUNTY DEPARTMENT OF WATER RESOURCES

DESIGN BY: STD. COMMITTEE
 DRAWN BY: GCDWR
 CHECKED BY: PSB
 APPROVED BY: ARS
 SCALE: NONE

**6" CLEAN-OUT
 AT RIGHT-OF-WAY**

DRAWING NO.
S14



NOTE:

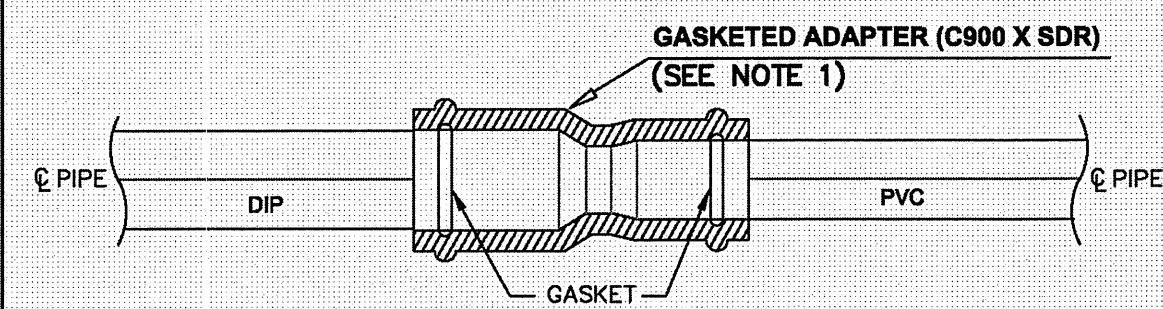
- FIRST SECTION OF NEW SEWER LINE SHALL BE ISOLATED FROM THE REST OF THE PROPOSED SYSTEM.
- THE FIRST MANHOLE OF THE PROPOSED SYSTEM SHALL BE USED TO FLUSH AND PUMP OUT THE PROPOSED SANITARY SEWER.
- TEMPORARY MECHANICAL (SCREW) PLUGS TO BE INSTALLED AS PART OF NEW SEWER INSTALLATION. PLUGS TO BE TIED TO MANHOLE STEP WITH A CABLE AND PADLOCKED TO PREVENT TAMPING. PLUGS TO REMAIN IN PLACE UNTIL PASSING FINAL INSPECTION.
- AFTER INSTALLATION OF NEW MANHOLE BY CONTRACTOR (INCLUDING INSTALLING TEMPORARY MECHANICAL PLUGS), GCDWR TO INSTALL LOCKING MANHOLE COVER. LOCKING MANHOLE COVER TO REMAIN IN PLACE UNTIL PASSING FINAL INSPECTION.
- UPON PASSING FINAL INSPECTION, GCDWR WILL REMOVE LOCKING MANHOLE COVER, AND INSTRUCT CONTRACTOR TO REMOVE TEMPORARY MECHANICAL PLUGS.

GWINNETT COUNTY DEPARTMENT OF WATER RESOURCES

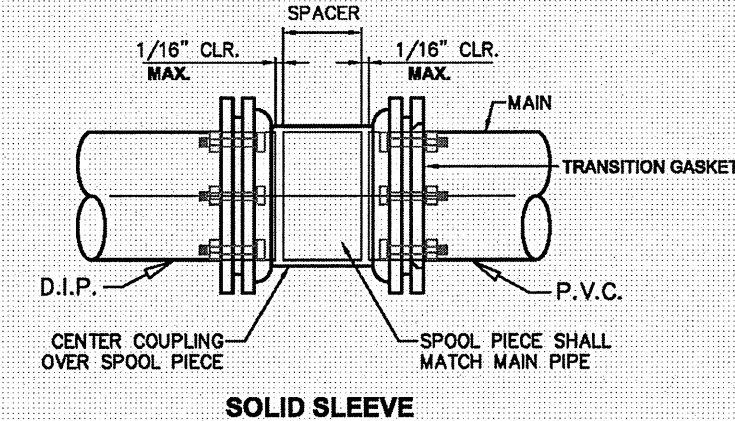
DESIGN BY: STD. COMMITTEE
 DRAWN BY: GCDWR
 CHECKED BY: PSB
 APPROVED BY: ARS
 SCALE: NONE

**NEW SANITARY SEWER MAIN
 CONNECTION**

DRAWING NO.
S15



OR



TRANSITION JOINT NOTES:

ONE OF THE FOLLOWING TRANSITION METHODS SHALL BE UTILIZED WHEN TRANSITIONING FROM DUCTILE IRON TO PVC PIPE:

- GASKETED ADAPTER SHALL BE TYPE C900 X SDR (HARCO OR EQUAL), AND MEET FOLLOWING STANDARDS:
 MATERIAL: ASTM 1784
 JOINTS: ASTM D3212
 GASKETS: F477
 FITTINGS: D3034 AND F1336
- SOLID SLEEVE ADAPTER SHALL BE STEEL AND PROPERLY COATED BEFORE BACKFILL.

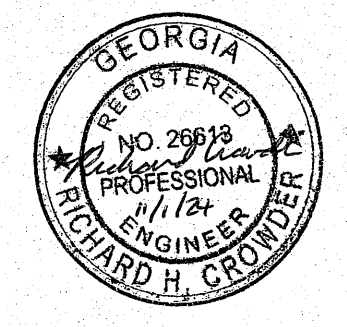
GWINNETT COUNTY DEPARTMENT OF WATER RESOURCES

DESIGN BY: STD. COMMITTEE
 DRAWN BY: GCDWR
 CHECKED BY: PSB
 APPROVED BY: ARS
 SCALE: NONE

**TRANSITION
 COLLAR**

DRAWING NO.
S16

© 2024
 PRECISION PLANNING, INC.
 ALL RIGHTS RESERVED.
 THESE CONSTRUCTION DOCUMENTS AND ANY PARTS THEREOF ARE THE PROPERTY OF PRECISION PLANNING, INC. AND ARE TO BE USED ONLY FOR THE PROJECT AND SITE SPECIFICALLY INDICATED HEREIN. ANY REUSE OR MODIFICATION OF THESE DOCUMENTS WITHOUT THE WRITTEN CONSENT OF PRECISION PLANNING, INC. IS PROHIBITED.



STAMP

PRECISION
 Planning Inc.
 planners • engineers • architects • surveyors
 Georgia Engineering Firm COA # PEF000529
 400 Pike Boulevard, Lawrenceville, GA 30046
 770.338.9000 • www.ppi.us

GRAVITY SEWER EXTENSION
 TO PARCEL 5026 038

CONSTRUCTION DETAILS	
SHEET TITLE	CHECKED
DESIGN	RC
DRAWN	DP
RC	RC

DATE	NO.	DESCRIPTION
11/01/24	0	ISSUED FOR BID

E24114
 PPI PROJECT NO.

08

RELEASE

NOTES:
 1. DISTURBED AREA CALCULATIONS INDICATE MAXIMUM TOTAL AREA DISTURBED DURING CONSTRUCTION AND IS LIMITED TO AREAS SHOWN.

TOTAL PROJECT AREA: 0.18 ACRES
 TOTAL DISTURBED AREA: 0.18 ACRES

N/F
 R5039 182
 SOLID ROCK EQUITY
 GROUP LLC
 D.B. 60854, PG. 819
 2148 SCENIC HWY

N/F
 R5039 006
 CAO XIAOHUA
 D.B. 53035, PG. 590
 2154 SCENIC HWY

EX. SSMH
 RIM = 1043.13
 INV IN = 1036.92 (6" PVC)
 INV OUT = 1035.99 (6" PVC)

N/F
 R5039 214
 NAV-SNELLVILLE LLC
 D.B. 55421, PG. 236
 2160 SCENIC HWY

JB
 RIM = 1043.88
 INV IN = 1034.37 (48" CMP)
 INV OUT = 1034.24 (48" CMP)

JB
 RIM = 1042.94
 INV IN = 1038.26 (18" CMP)
 INV OUT = 1038.12 (18" CMP)

JB
 RIM = 1041.65
 INV IN = 1034.07 (15" CMP)
 INV OUT = 1034.51 (15" CMP)

JB
 RIM = 1041.87
 INV IN = 1035.58 (6" PVC)
 INV OUT = 1035.36 (6" PVC)

JB
 RIM = 1042.94
 INV IN = 1038.26 (18" CMP)
 INV OUT = 1038.12 (18" CMP)

JB
 RIM = 1041.53
 INV IN = 1033.73 (15" RCP)
 INV OUT = 1033.93 (36" RCP)

JB
 RIM = 1041.53
 INV IN = 1033.73 (15" RCP)
 INV OUT = 1033.93 (36" RCP)

JB
 RIM = 1041.53
 INV IN = 1033.73 (15" RCP)
 INV OUT = 1033.93 (36" RCP)

JB
 RIM = 1041.53
 INV IN = 1033.73 (15" RCP)
 INV OUT = 1033.93 (36" RCP)

JB
 RIM = 1041.53
 INV IN = 1033.73 (15" RCP)
 INV OUT = 1033.93 (36" RCP)

JB
 RIM = 1041.53
 INV IN = 1033.73 (15" RCP)
 INV OUT = 1033.93 (36" RCP)

JB
 RIM = 1041.53
 INV IN = 1033.73 (15" RCP)
 INV OUT = 1033.93 (36" RCP)

JB
 RIM = 1041.53
 INV IN = 1033.73 (15" RCP)
 INV OUT = 1033.93 (36" RCP)

JB
 RIM = 1041.53
 INV IN = 1033.73 (15" RCP)
 INV OUT = 1033.93 (36" RCP)

JB
 RIM = 1041.53
 INV IN = 1033.73 (15" RCP)
 INV OUT = 1033.93 (36" RCP)

JB
 RIM = 1041.53
 INV IN = 1033.73 (15" RCP)
 INV OUT = 1033.93 (36" RCP)

JB
 RIM = 1041.53
 INV IN = 1033.73 (15" RCP)
 INV OUT = 1033.93 (36" RCP)

JB
 RIM = 1041.53
 INV IN = 1033.73 (15" RCP)
 INV OUT = 1033.93 (36" RCP)

Sd1-NS

SILT FENCE
 TYPE "NS" (TYP.)

EX. SSMH (FID 237976)
 RIM = 1039.42
 INV IN = 1034.71 (6" DIP)
 INV OUT = 1034.22 (6" PVC)

EX. SSMH (FID 3274829)
 RIM = 1041.04
 INV IN = 1035.58 (6" PVC)
 INV OUT = 1035.36 (6" PVC)

IE = 1037.38
 INV IN = 1037.38
 INV OUT = 1037.38

SWCB
 RIM = 1041.87
 INV IN = 1034.52 (15" CMP)
 INV OUT = 1034.51 (15" CMP)

GI
 RIM = 1038.20
 INV OUT = 1033.90 (24" RCP)

SWCB
 RIM = 1039.86
 INV OUT = 1035.09 (15" CMP)

SWCB
 RIM = 1041.04
 INV IN = 1034.52 (15" CMP)
 INV OUT = 1034.51 (15" CMP)

SWCB
 RIM = 1041.87
 INV IN = 1034.52 (15" CMP)
 INV OUT = 1034.51 (15" CMP)

SWCB
 RIM = 1041.87
 INV IN = 1034.52 (15" CMP)
 INV OUT = 1034.51 (15" CMP)

SWCB
 RIM = 1041.87
 INV IN = 1034.52 (15" CMP)
 INV OUT = 1034.51 (15" CMP)

SWCB
 RIM = 1041.87
 INV IN = 1034.52 (15" CMP)
 INV OUT = 1034.51 (15" CMP)

SWCB
 RIM = 1041.87
 INV IN = 1034.52 (15" CMP)
 INV OUT = 1034.51 (15" CMP)

SWCB
 RIM = 1041.87
 INV IN = 1034.52 (15" CMP)
 INV OUT = 1034.51 (15" CMP)

SWCB
 RIM = 1041.87
 INV IN = 1034.52 (15" CMP)
 INV OUT = 1034.51 (15" CMP)

SWCB
 RIM = 1041.87
 INV IN = 1034.52 (15" CMP)
 INV OUT = 1034.51 (15" CMP)

SWCB
 RIM = 1041.87
 INV IN = 1034.52 (15" CMP)
 INV OUT = 1034.51 (15" CMP)

SWCB
 RIM = 1041.87
 INV IN = 1034.52 (15" CMP)
 INV OUT = 1034.51 (15" CMP)

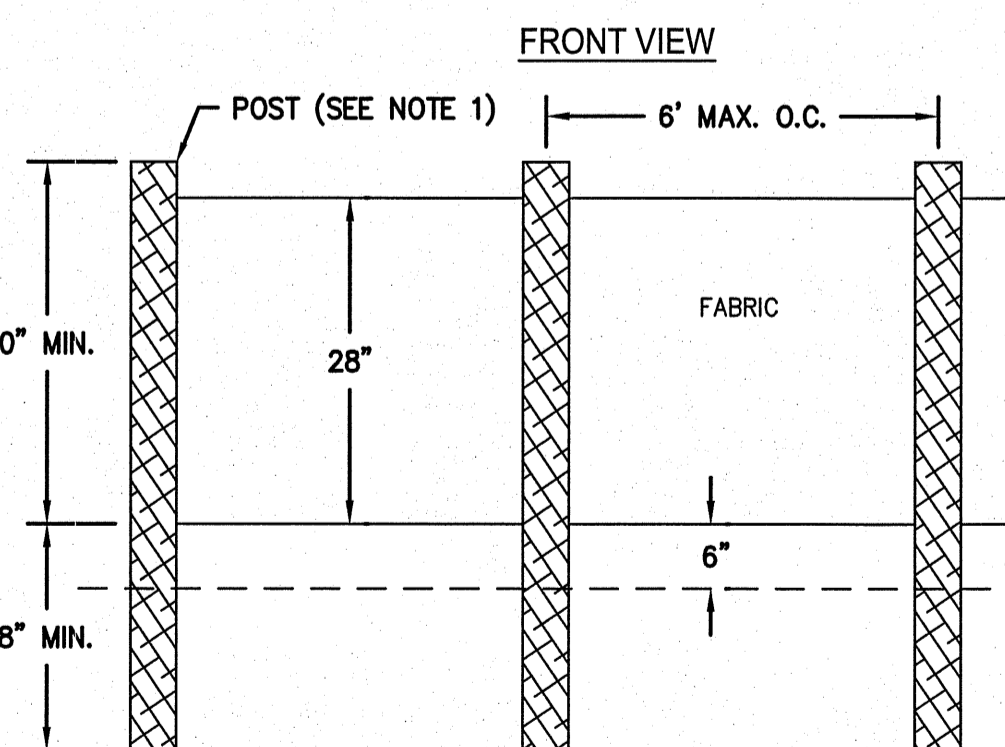
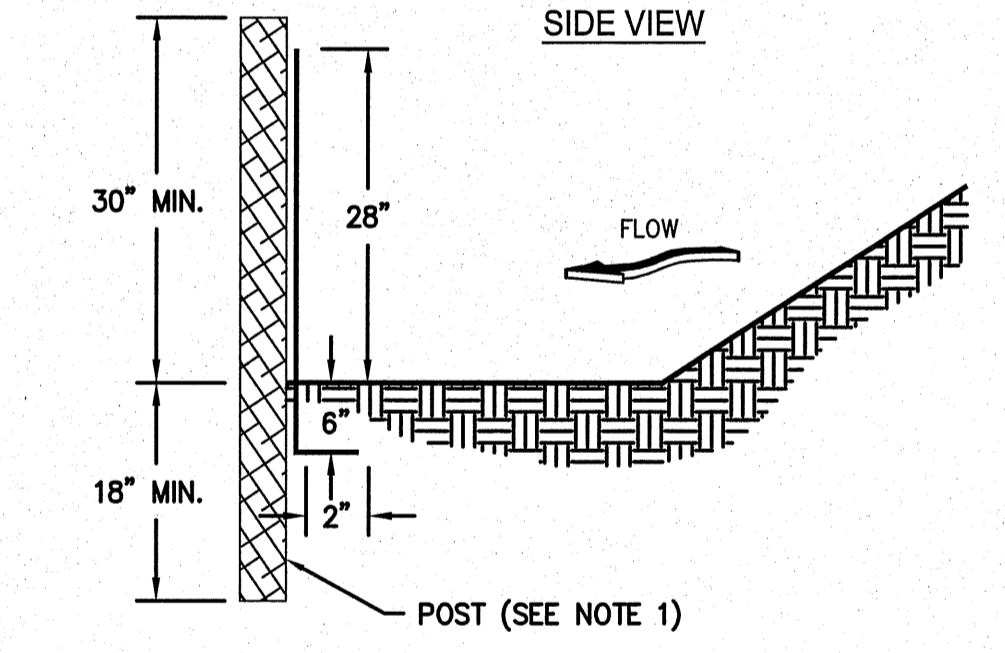
SWCB
 RIM = 1041.87
 INV IN = 1034.52 (15" CMP)
 INV OUT = 1034.51 (15" CMP)

SWCB
 RIM = 1041.87
 INV IN = 1034.52 (15" CMP)
 INV OUT = 1034.51 (15" CMP)

EROSION CONTROL NOTES:
 1. THE ESCAPE OF SEDIMENT FROM THE SITE SHALL BE PREVENTED BY THE INSTALLATION OF EROSION AND SEDIMENT CONTROL PRACTICES PRIOR TO LAND DISTURBING ACTIVITIES.
 2. EROSION CONTROL MEASURES SHALL BE MAINTAINED AT ALL TIMES. IF FULL IMPLEMENTATION OF THE APPROVED PLAN DOES NOT PROVIDE FOR EFFECTIVE EROSION CONTROL, ADDITIONAL EROSION AND SEDIMENT CONTROL MEASURES SHALL BE IMPLEMENTED TO CONTROL OR TREAT THE SEDIMENT SOURCE.
 3. ANY DISTURBED AREA LEFT EXPOSED FOR A PERIOD GREATER THAN 14 DAYS SHALL BE STABILIZED WITH MULCH OR TEMPORARY SEEDING.
 4. IT SHALL BE THE RESPONSIBILITY OF THE PERSON PERFORMING THE CONSTRUCTION OPERATIONS TO INSTALL AND MAINTAIN ALL EROSION AND SEDIMENT CONTROL MEASURES INDICATED ON THESE DRAWINGS OR TO PROVIDE ADDITIONAL MEASURES AS DEEMED NECESSARY BY SITE CONDITIONS.
 5. ADDITIONAL MEASURES SHALL BE ADDED IF DETERMINED TO BE NECESSARY BY ON-SITE INSPECTIONS AND/OR BY THE GOVERNING AUTHORITY.
 6. STANDARDS AND SPECIFICATIONS: ALL DESIGNS WILL CONFORM TO AND ALL WORK WILL BE PERFORMED IN ACCORDANCE WITH THE STANDARDS AND SPECIFICATIONS OF THE "MANUAL FOR EROSION AND SEDIMENT CONTROL IN GEORGIA" (LATEST EDITION), PUBLISHED BY THE GEORGIA SOIL AND WATER CONSERVATION COMMISSION.
 7. TEMPORARY EROSION MEASURES: TEMPORARY EROSION CONTROL STRUCTURES, MEASURES, AND DEVICES SHALL BE INSTALLED AND OPERATIONAL PRIOR TO ANY LAND DISTURBING ACTIVITY. IF, DURING ANY STAGE OF CONSTRUCTION, ADDITIONAL MEASURES ARE DEEMED NECESSARY THEY SHALL BE INSTALLED AS SOON AS POSSIBLE AFTER NOTIFICATION.
 8. MAINTENANCE OF TEMPORARY EROSION CONTROL MEASURES SHALL BE REQUIRED THROUGHOUT ALL STAGES OF CONSTRUCTION. MAINTENANCE SHALL BE IN ACCORDANCE WITH THE EROSION CONTROL MANUAL CHAPTER 6 AND THE EROSION CONTROL DETAILS INCLUDED ON THESE DRAWINGS. MAINTENANCE OF ALL EROSION CONTROL MEASURES SHALL BE THE RESPONSIBILITY OF THE PERSON PERFORMING THE CONSTRUCTION.
 9. PERMANENT EROSION MEASURES: PERMANENT EROSION CONTROL STRUCTURES SHALL BE INSTALLED AS CONSTRUCTION PROGRESSES. PERMANENT VEGETATIVE MEASURES SHALL BE PLACED IMMEDIATELY DURING THE VARIOUS STAGES OF CONSTRUCTION.
 10. ALL GRASSING/SODDING AND MULCHING SHALL TAKE PLACE AS SOON AS PRACTICAL AFTER BACKFILLING OF TRENCH EXCAVATIONS OR OTHER LAND DISTURBING ACTIVITIES.
 11. CONSTRUCTION MATERIAL STORAGE AREA WILL REQUIRE THE INSTALLATION OF A CONSTRUCTION EXIT (CO) TO REDUCE OR ELIMINATE THE TRANSPORT OF MUD FROM THE AREA. SILT FENCE SHALL ALSO BE INSTALLED TO PREVENT SEDIMENT FROM LEAVING THE MATERIAL STORAGE AREA. AFTER DEMOBILIZATION, THE MATERIAL STORAGE AREA SHALL BE SEEDING AND MULCHED, AND THE SILT FENCE SHALL REMAIN UNTIL THE AREA IS PERMANENTLY STABILIZED.

EROSION CONTROL LEGEND

DESCRIPTION	SYMBOL
Sd1-NS SILT FENCE	XX
DISTURBED AREA LIMITS	LIMITS

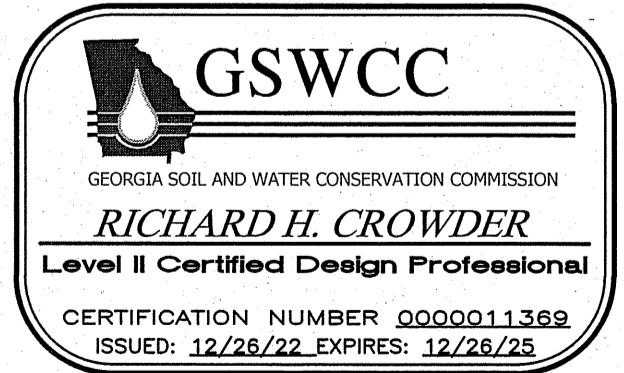


NOTES:
 1. USE STEEL OR WOOD POSTS OR AS SPECIFIED BY THE EROSION, SEDIMENTATION, AND POLLUTION CONTROL PLAN.

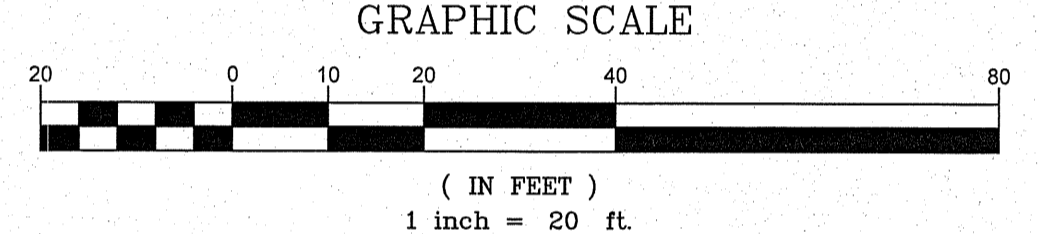
Ds1	STABILIZE DISTURBED AREA (WITH MULCHING ONLY) - AS NECESSARY	APPLIES TO DISTURBED AREAS WHERE SEEDING MAY NOT HAVE SUITABLE GROWING SEASON TO PRODUCE AN EROSION RETARDANT COVER.	
	SPECIES	RATE	
	STRAW OR HAY	2.5 TONS/AC.	
Ds2	TEMPORARY GRASSING - AS NECESSARY	TEMPORARY GRASSING SHALL CONSIST OF SOWING A QUICK GRASS SUCH AS RYE, BROWN TOP MILLET, OR A GRASS SUITABLE TO THE AREA AND SEASON. LIME AND FERTILIZER SHALL BE OMITTED.	
	SPECIES	RATE	PLANTING DATE
	RYEGRASS, ANNUAL	40#/AC.	AUGUST THRU MARCH
	MILLET, BROWNTOP	40#/AC.	APRIL THRU JULY
Ds4	SODDING (TO MATCH EXISTING SPECIES)	SODDING SHALL CONSIST OF GROUND PREPARATION, LIMING AND FERTILIZATION, AND CERTIFIED SOD OF A VARIETY MATCHING EXISTING GRASS SPECIES. THE GROUND SHALL BE PREPARED BY CLEARING SURFACE OF TRASH, WOODY DEBRIS, STONES, AND CLODS LARGER THAN 1". APPLY SOD TO SOIL SURFACES ONLY. MIX 10-10-10 FERTILIZER INTO SOIL AT 0.025 LBS./SQ.FT. APPLY AGRICULTURAL LIME AT A RATE OF 0.05 LBS./SQ.FT. IRRIGATE SOD AND SOIL TO A DEPTH OF 4" IMMEDIATELY AFTER INSTALLATION. SOD SHOULD NOT BE CUT OR SPREAD IN EXTREMELY WET OR DRY WEATHER. GRASS SPECIES ARE TO MATCH EXISTING SPECIES WHEN REPLACING GRASS LAWNS OF PROPERTY OWNERS.	

OWNER/PRIMARY PERMITTEE:
 CITY OF SNELLVILLE
 2342 OAK ROAD
 SNELLVILLE, GA 30078
 PH. 770-985-3502
 email: MPEPPER@SNELLVILLE.ORG

24-HOUR EMERGENCY CONTACT:
 MATTHEW PEPPER
 770-985-3502



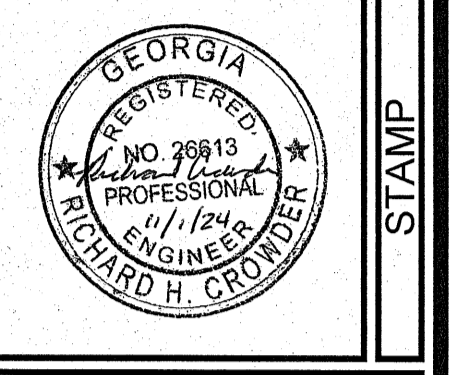
Sd1-NS SEDIMENT BARRIER
 NONSENSITIVE AREAS - TYPE A SILT FENCE



- Ds1 MULCHING
- Ds2 TEMPORARY GRASSING
- Ds4 SOD ALL DISTURBED GRASS AREAS MATCH EXISTING SPECIES

CONSTRUCTION EXIT - CONTRACTOR TO DETERMINE ACTUAL LOCATION BASED ON MATERIAL STORAGE AREA LOCATION

PRECISION PLANNING, INC.
 ALL RIGHTS RESERVED.
 THESE CONSTRUCTION DOCUMENTS AND ANY INSTRUMENTS OF SERVICE HEREAFTER PREPARED BY PRECISION PLANNING, INC. ARE THE PROPERTY OF PRECISION PLANNING, INC. AND ARE TO BE USED ONLY FOR THE PROJECT AND SITE SPECIFICALLY INDICATED HEREON. ANY REUSE OR REPRODUCTION OF THESE DOCUMENTS WITHOUT THE WRITTEN PERMISSION OF PRECISION PLANNING, INC. IS STRICTLY PROHIBITED.



PRECISION
 Planning Inc.
 planners • engineers • architects • surveyors
 Georgia Engineering Firm COA # PEF000529
 400 Pike Boulevard, Lawrenceville, GA 30046
 770.338.8000 • www.ppi.us

GRAVITY SEWER EXTENSION
 TO PARCEL 5026 038

DATE	NO.	DESCRIPTION	SHEET TITLE			
			DESIGN	DRAWN	CHECKED	RC
11/01/24	0	ISSUED FOR BID	RC	DP	RC	RC

DATE	NO.	DESCRIPTION
11/01/24	0	ISSUED FOR BID

E24114
 PPI PROJECT NO.

09