





**NORTH ELEVATION**

- EIFS 1 - Oyster Shell
- EIFS 2 - Monastery Brown
- Metal Seam Roof & Cap - Dark Bronze
- Quick Brick - Promenade Blend
- Cast Stone - Tan
- Cultured Stone - Echo Ridge
- CMU - SW7525 Tree Branch Color



**EAST ELEVATION**

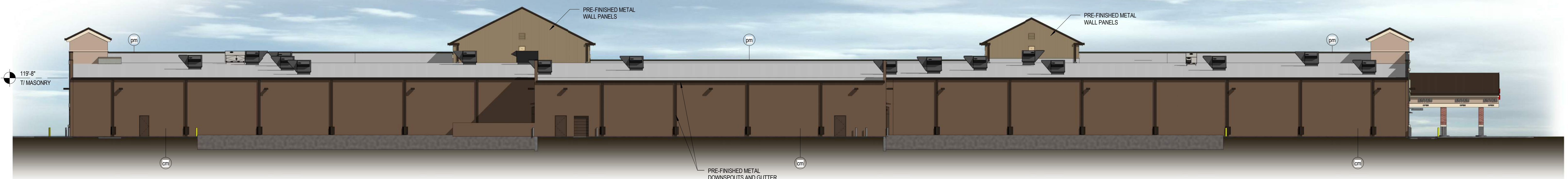
**North Elevation - Material Calculations**

Overall Elevation Area:	14,280sf
Quick Brick:	44%
Cultured Stone:	9%
Cast Stone:	4%
Glazing:	13%
EIFS 1:	13%
EIFS 2:	12%
Exposed Metal:	1%
Metal Seam Roof & Cap:	4%

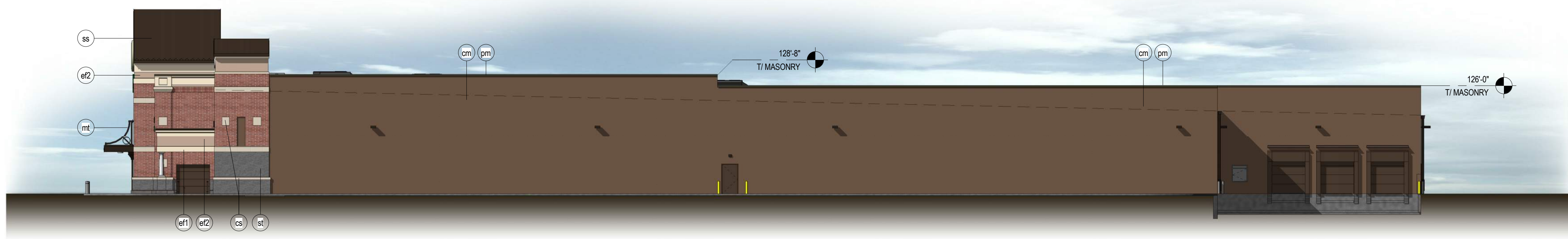
**East Elevation - Material Calculations**

Overall Elevation Area:	8,820sf
Quick Brick:	53%
Cultured Stone:	10%
Cast Stone:	3%
Glazing:	2%
EIFS 1:	9%
EIFS 2:	3%
Exposed Metal:	1%
Metal Seam Roof & Cap:	3%
CMU:	10%
Doors/Miscellaneous:	6%



**SOUTH ELEVATION**

- FINISH SCHEDULE**
- st Cultured Stone -Country Ledgeston, Echo Ridge, Mortar set (not dry stacked)
  - pm Prefinished Metal -Berridge Dark Bronze
  - sf Clear Anodized Aluminum
  - cs Cast Stone
  - gl Glazing
  - cm CMU, Painted PT-07: Sherwin Williams SW7525 - Tree Branch
  - mt Exposed Metal -Paint to match "pm"
  - br1 4" Tall Cast Brick -Oldcastle Promenade
  - br2 8" Tall Cast Brick -Oldcastle Promenade
  - ss Standing Seam Metal Roof -Berridge Dark Bronze
  - ef1 E.I.F.S. -Dryvit Oyster Shell (456), Sandpebble Fine Finish
  - ef2 E.I.F.S. -Dryvit Monastery Brown (381), Sandpebble Fine Finish



**WEST ELEVATION**

**South Elevation - Material Calculations**

Overall Elevation Area:	9,859sf
Quick Brick:	1%
Cultured Stone:	1%
Cast Stone:	1%
Glazing:	0%
EIFS 1:	1%
EIFS 2:	3%
Exposed Metal:	0%
Metal Seam Roof & Cap:	3%
CMU:	89%
Doors/Miscellaneous:	1%

**West Elevation - Material Calculations**

Overall Elevation Area:	8,964sf
Quick Brick:	5%
Cultured Stone:	2%
Cast Stone:	1%
Glazing:	0%
EIFS 1:	2%
EIFS 2:	1%
Exposed Metal:	1%
Metal Seam Roof & Cap:	4%
CMU:	80%
Doors/Miscellaneous:	4%



October 27, 2015

Kroger GA743

Snellville, GA  
516309

