

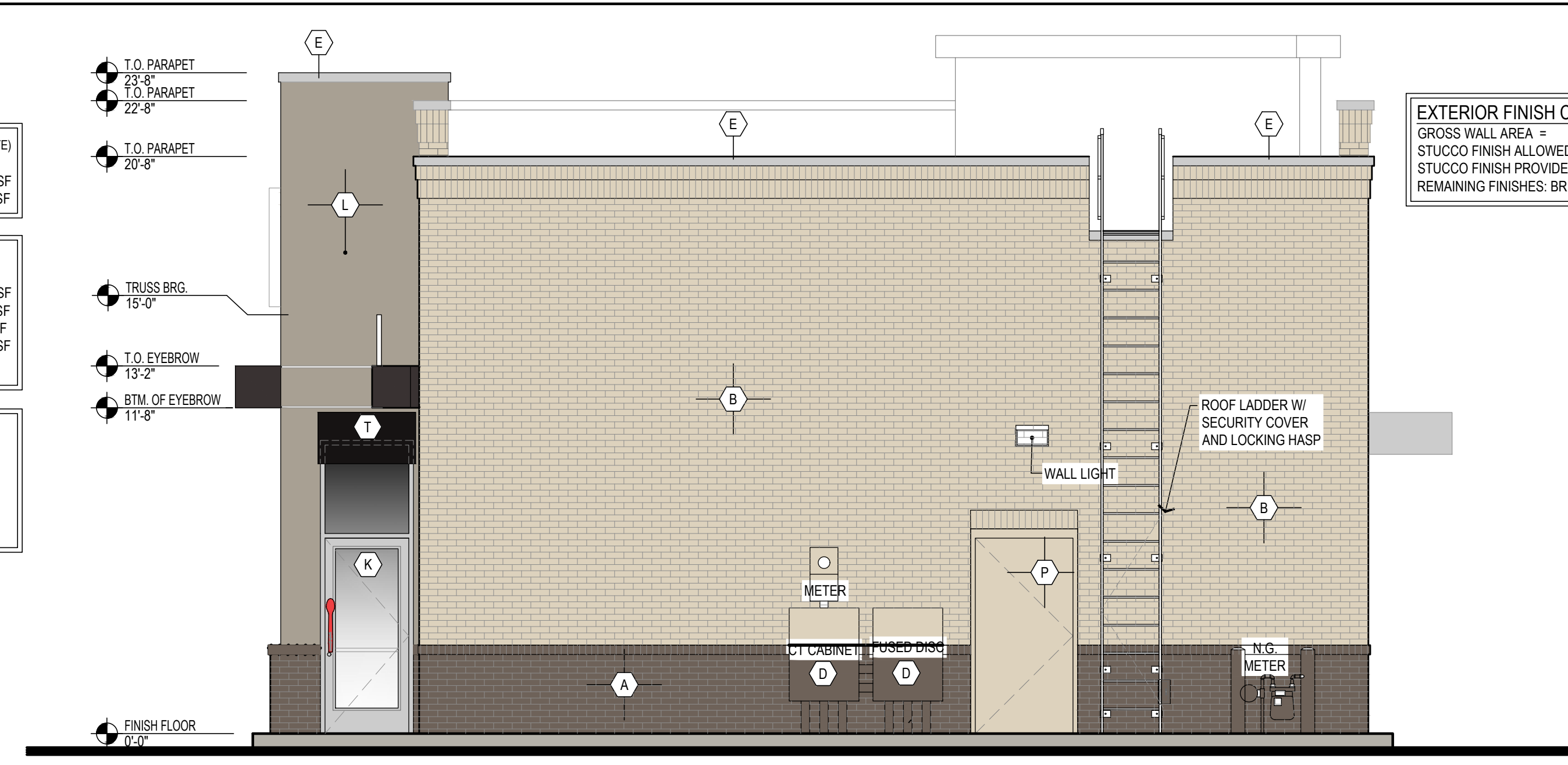


1 WEST (FRONT) ELEVATION  
A3.1 SCALE: 1/4" = 1'-0"

**FENESTRATION CALCULATION (STATE RTE)**  
 GROSS WALL AREA = 765.00 SF  
 STOREFRONT REQUIRED: 765SF X .3 = 229.5 SF  
 STOREFRONT PROVIDED: 231.0 SF

**EXTERIOR FINISH CALCULATION**  
 GROSS WALL AREA = 765.00 SF  
 STUCCO FINISH ALLOWED: 765SF X .3 = 229.5 SF  
 STUCCO FINISH PROVIDED: 215.4 SF  
 ACCENT MATL ALLOWED: 765 SF X .1 = 76.5 SF  
 ACCENT MATL PROVIDED (OTHER) = 36.4 SF  
 REMAINING FINISHES: BRICK & STOREFRONT

**WALL SIGN CALCULATION**  
 WALL AREA = 765.00 SF  
 765.00 SF X 5% SF = 38.25 SF ALLOWABLE  
 DQ SIGN = 27.60 SF PROVIDED  
 GRILL & CHILL SIGN = 8.40 SF PROVIDED  
 TOTAL SIGN AREA PROVIDED = 36.00 SF



2 EAST (REAR) ELEVATION  
A3.1 SCALE: 1/4" = 1'-0"

**EXTERIOR FINISH CALCULATION**  
 GROSS WALL AREA = 824.00 SF  
 STUCCO FINISH ALLOWED: 824SF X .5 = 412.0 SF  
 STUCCO FINISH PROVIDED: 89.0 SF  
 REMAINING FINISHES: BRICK & STOREFRONT

**WILKERSON ARCHITECTS, LLC**  
 119 East Tallulah Drive  
 Greenville, S.C. 29605  
 864-370-2582  
 864-240-5375 f

*James E. Wilkerson*  
 JAMES E. WILKERSON  
 09/13/22  
 REGISTRATION NO. 8813  
 REGISTERED ARCHITECT

JOB NO. 202206

DQ GRILL & CHILL  
 2340 SCENIC HIGHWAY  
 SNELLVILLE, GA 30078



**GRILL & CHILL**  
 AMERICAN DAIRY QUEEN  
 MINNEAPOLIS, MN U.S.A.

\*REGISTERED U.S. PATENT OFFICE, AMERICAN DAIRY QUEEN CORPORATION, THIS DRAWING, ITS DESIGN DETAIL AND INVENTION ARE THE PROPERTY OF AMERICAN DAIRY QUEEN INC. (ADQ) AND SHALL NOT BE COPIED IN ANY MANNER NOR DISCLOSED TO ANY OUTSIDE PARTY WITHOUT ADQ CONSENT.

**BUILDING TYPE:**  
 DAIRY QUEEN GRILL & CHILL  
 CORE46  
 STORE No. 71086

DRAWN, CHECKED, & APPROVED BY: ADQ DESIGN-ARCHITECTURE-CONSTRUCTION (DAC) DEPARTMENT

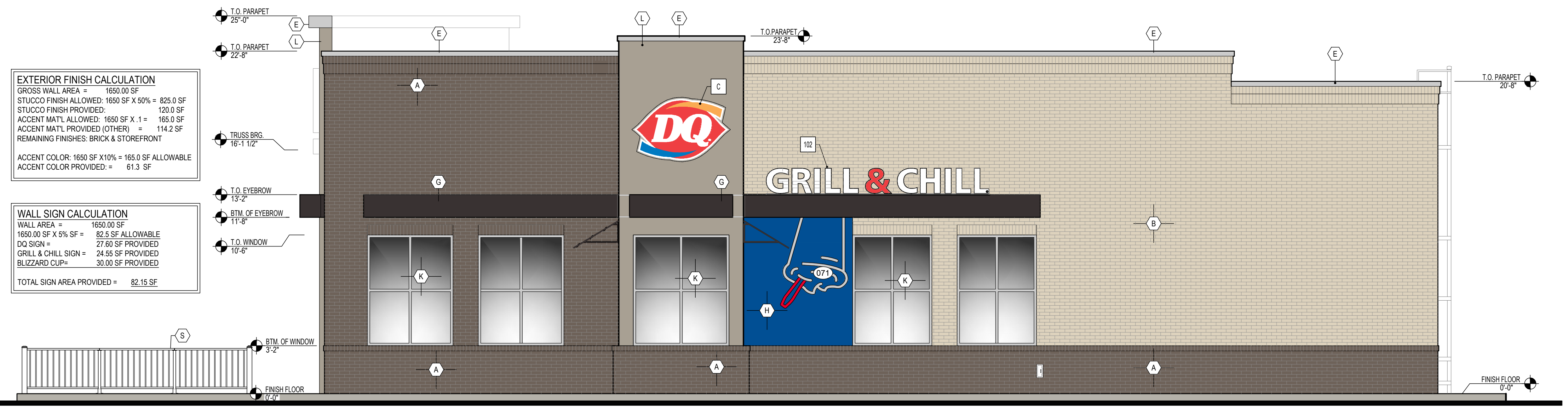
THIS IS "PLAN" NORTH FOR ACTUAL BUILDING ORIENTATION REFER TO SITE PLAN (BY OTHERS)

ISSUE DATE:	04/13/2022
REVISION DATE:	04/13/22
	▲ ISSUE FOR REVIEW
	▲
	▲
	▲
	▲
	▲

**EXTERIOR ELEVATIONS**

SHEET NUMBER:

**A3.1**



3 SOUTH (ENTRANCE) ELEVATION  
A3.1 SCALE: 1/4" = 1'-0"

**EXTERIOR FINISH CALCULATION**  
 GROSS WALL AREA = 1650.00 SF  
 STUCCO FINISH ALLOWED: 1650 SF X 50% = 825.0 SF  
 STUCCO FINISH PROVIDED: 120.0 SF  
 ACCENT MATL ALLOWED: 1650 SF X .1 = 165.0 SF  
 ACCENT MATL PROVIDED (OTHER) = 114.2 SF  
 REMAINING FINISHES: BRICK & STOREFRONT

ACCENT COLOR: 1650 SF X 10% = 165.0 SF ALLOWABLE  
 ACCENT COLOR PROVIDED: = 61.3 SF

**WALL SIGN CALCULATION**  
 WALL AREA = 1650.00 SF  
 1650.00 SF X 5% SF = 82.5 SF ALLOWABLE  
 DQ SIGN = 27.60 SF PROVIDED  
 GRILL & CHILL SIGN = 24.55 SF PROVIDED  
 BLIZZARD CUP = 30.00 SF PROVIDED  
 TOTAL SIGN AREA PROVIDED = 82.15 SF

**EXTERIOR FINISH CALCULATION**  
 GROSS WALL AREA = 1695.00 SF  
 STUCCO FINISH ALLOWED: 1695 SF X 50% = 847.5 SF  
 STUCCO FINISH PROVIDED: 463.6 SF  
 ACCENT MATERIALS PROVIDED = 98.50 SF  
 REMAINING FINISHES: BRICK & STOREFRONT

ACCENT COLOR: 1695 SF X 10% = 169.5 SF ALLOWABLE  
 ACCENT COLOR PROVIDED: = 152.5 SF

**WALL SIGN CALCULATION**  
 WALL AREA = 1695.00 SF  
 1695.00 SF X 5% SF = 84.75 SF ALLOWABLE  
 DQ SIGN = 27.60 SF PROVIDED  
 PRODUCT MURALS = 30.00 SF PROVIDED  
 TOTAL SIGN AREA PROVIDED = 57.60 SF



4 NORTH (DRIVE-THRU) ELEVATION  
A3.1 SCALE: 1/4" = 1'-0"