

12/10/2021 11:48:56 AM THIS DRAWING IS THE PROPERTY OF ALEX ROUSH ARCHITECTS - UNAUTHORIZED USE OF ANY KIND, INCLUDING USE ON OTHER PROJECTS, IS PROHIBITED.



PE1 SOUTH - WEST  
3 | 1/8" = 1'-0"



PE2 NORTH - WEST (FRONT)  
3 | 1/8" = 1'-0"



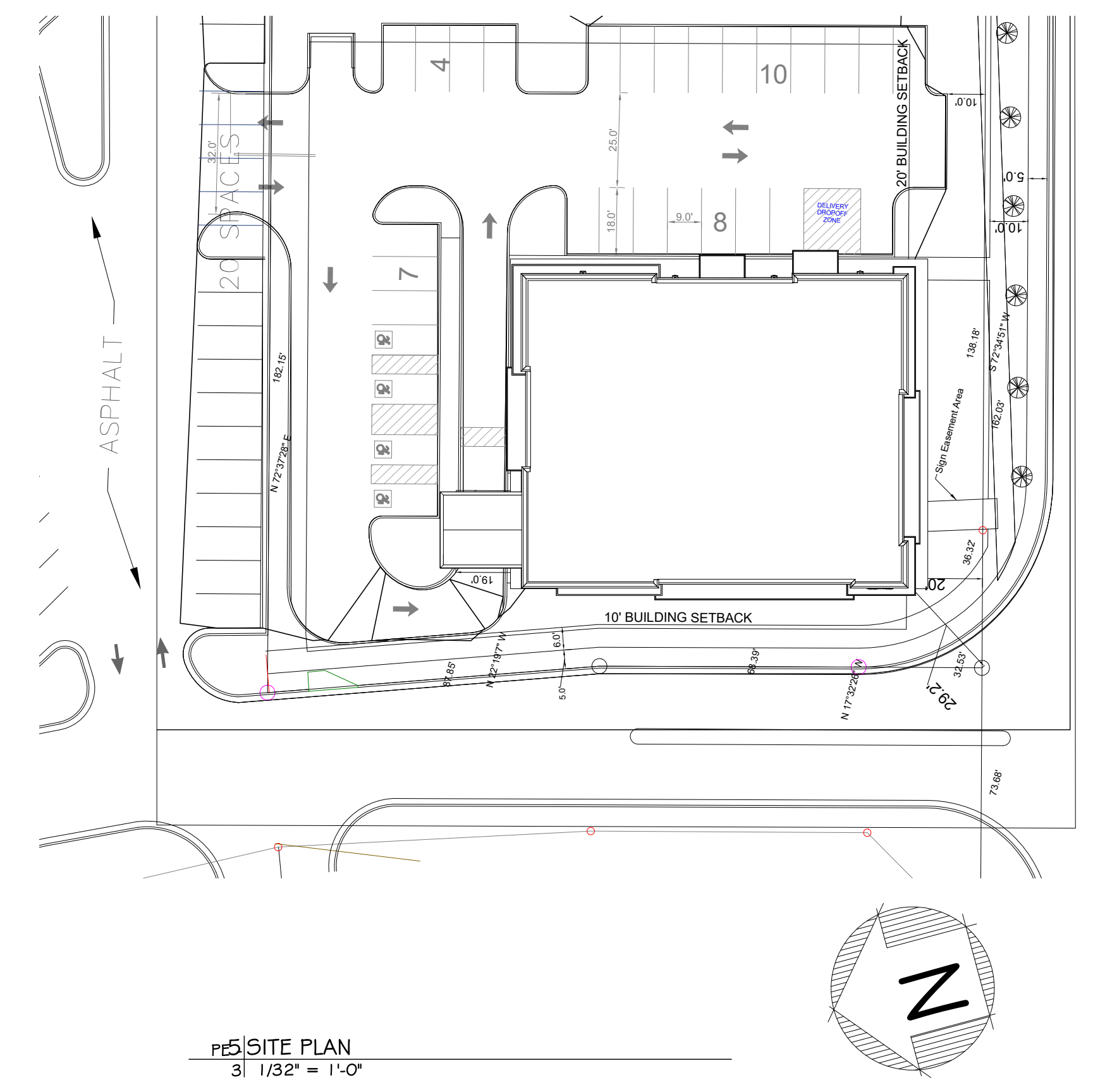
PE3 NORTH - EAST (DELIVERY)  
3 | 1/8" = 1'-0"



PE4 SOUTH - EAST (STREET FACING)  
3 | 1/8" = 1'-0"

EXTERIOR FINISHES	
A	STONE BASE: <MANUF. SPEC, COLOR & MORTAR COLOR>
B	MODULAR BRICK: <MANUF. SPEC, COLOR & MORTAR COLOR>
C	MODULAR BRICK: <MANUF. SPEC, COLOR & MORTAR COLOR>
D	PRECAST WATER TABLE AND WALL CAPS: <MANUF. SPEC, COLOR & MORTAR COLOR>
E	ACM PANELS: <MANUF. & MATERIAL SPEC>: ENTRY PORTAL - DAVITA BLUE
F	EIFS: STO-THERM - <COLOR & TEXTURE>
G	EPOXY PAINT ON STEEL METAL FABRICATION: <SPEC MANUF. & COLOR>
H	EPOXY PAINT ON STEEL METAL FABRICATION: <SPEC MANUF. & COLOR>
I	COPING, SCUPPERS DOWNSPOUT & BREAK METAL TRIM - <COLOR>
J	KAWNEER STOREFRONT - <FINISH>

- SEAL ALL PENETRATIONS THRU THE WALL FINISH WITH SEALANT TO MATCH EXT. FINISHES - SONOLAST BS-1 OR APPROVED EQUAL
- EJ = EXPANSION JOINT; APPLY BRICK/EIFS CONTROL JOINTS AT LOCATIONS REQ'D PER THE MANUFACTURER RECOMMENDATIONS



PE5 SITE PLAN  
3 | 1/32" = 1'-0"

DAVITA HEALTHCARE PARTNERS, INC.  
2000 16TH STREET  
DENVER, CO 80202

ALEX ROUSH ARCHITECTS, INC.  
2255 CLAMBERLAND PARKWAY, BLDG. 100  
ATLANTA, GA 30339  
(770) 333-7878

SHEPHERD, HARVEY & ASSOCIATES  
4955 RIVER GREEN PARKWAY, STE 400  
DULUTH, GA 30096-2569  
(770) 495-4007

DATE	DESCRIPTION	BY	CHKD
<XXXXXX>	RELEASE PERMIT & BID SET		

OWNER: TOTAL RENAL CARE, INC.  
66 DAVITA HEALTHCARE PARTNERS, INC.  
2000 16TH STREET  
DENVER, CO 80202

PROJECT: Snellville Dialysis Shell  
EXTERIOR ELEVATIONS

XXXX Main Street East  
Snellville, GA

STAMP

DRAWN BY: GR  
DATE: 12.3.2021  
PROJECT #: 2021.50

SHEET NO. PE - 3