

HENRY CLOWER BLVD MULTI-FAMILY - SNELLVILLE, GA

ZONING DESIGN

APRIL 12, 2024

PREPARED FOR:

CITY OF SNELLVILLE

ARRIS 

SITE PLAN



AERIAL RENDERING



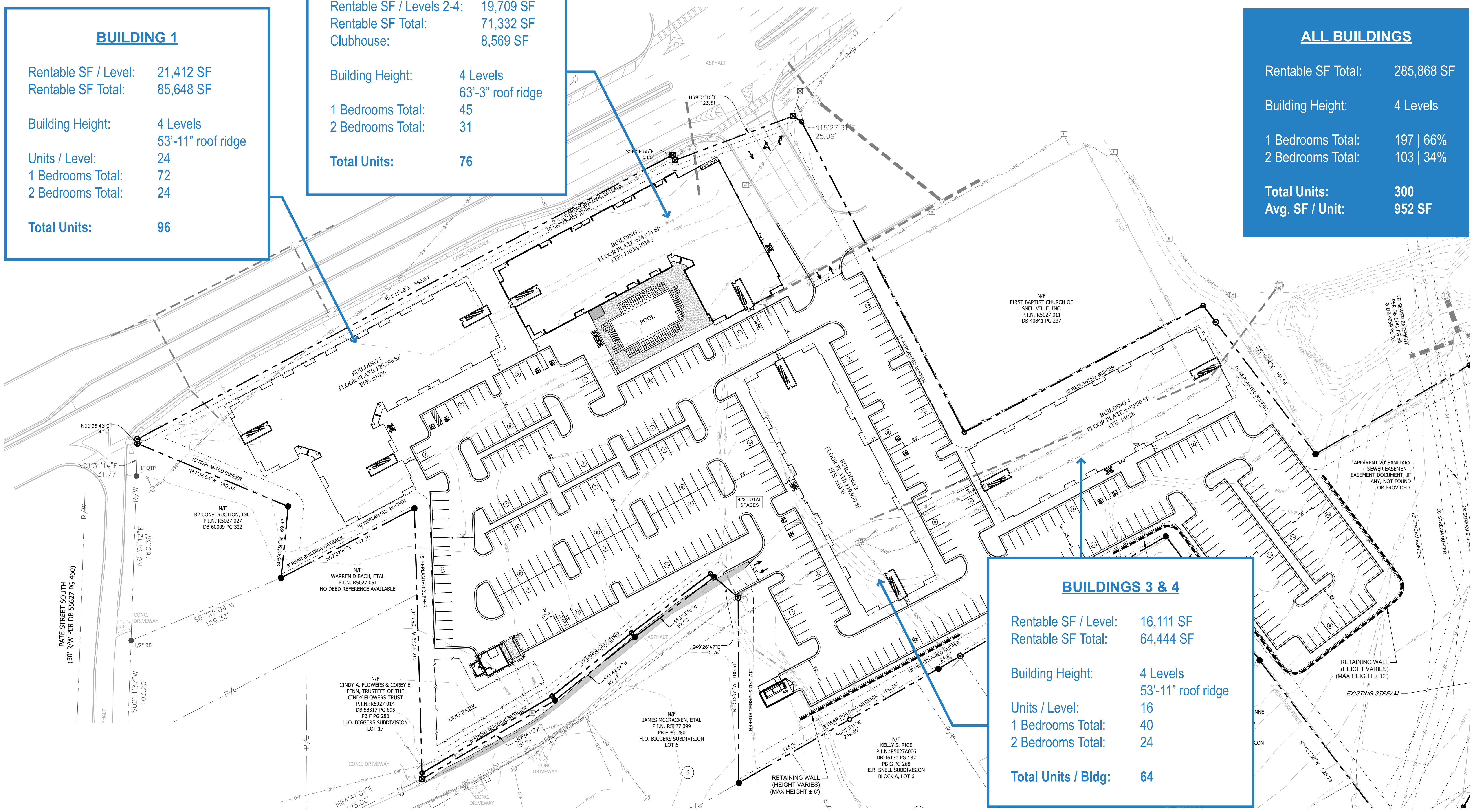
UNIT MIX

BLDG SQUARE FOOTAGES

BUILDING 1	
Rentable SF / Level:	21,412 SF
Rentable SF Total:	85,648 SF
Building Height:	4 Levels
	53'-11" roof ridge
Units / Level:	24
1 Bedrooms Total:	72
2 Bedrooms Total:	24
Total Units:	96

BUILDING 2	
Rentable SF / Level 1:	12,205 SF
Rentable SF / Levels 2-4:	19,709 SF
Rentable SF Total:	71,332 SF
Clubhouse:	8,569 SF
Building Height:	4 Levels
	63'-3" roof ridge
1 Bedrooms Total:	45
2 Bedrooms Total:	31
Total Units:	76

ALL BUILDINGS	
Rentable SF Total:	285,868 SF
Building Height:	4 Levels
1 Bedrooms Total:	197 66%
2 Bedrooms Total:	103 34%
Total Units:	300
Avg. SF / Unit:	952 SF

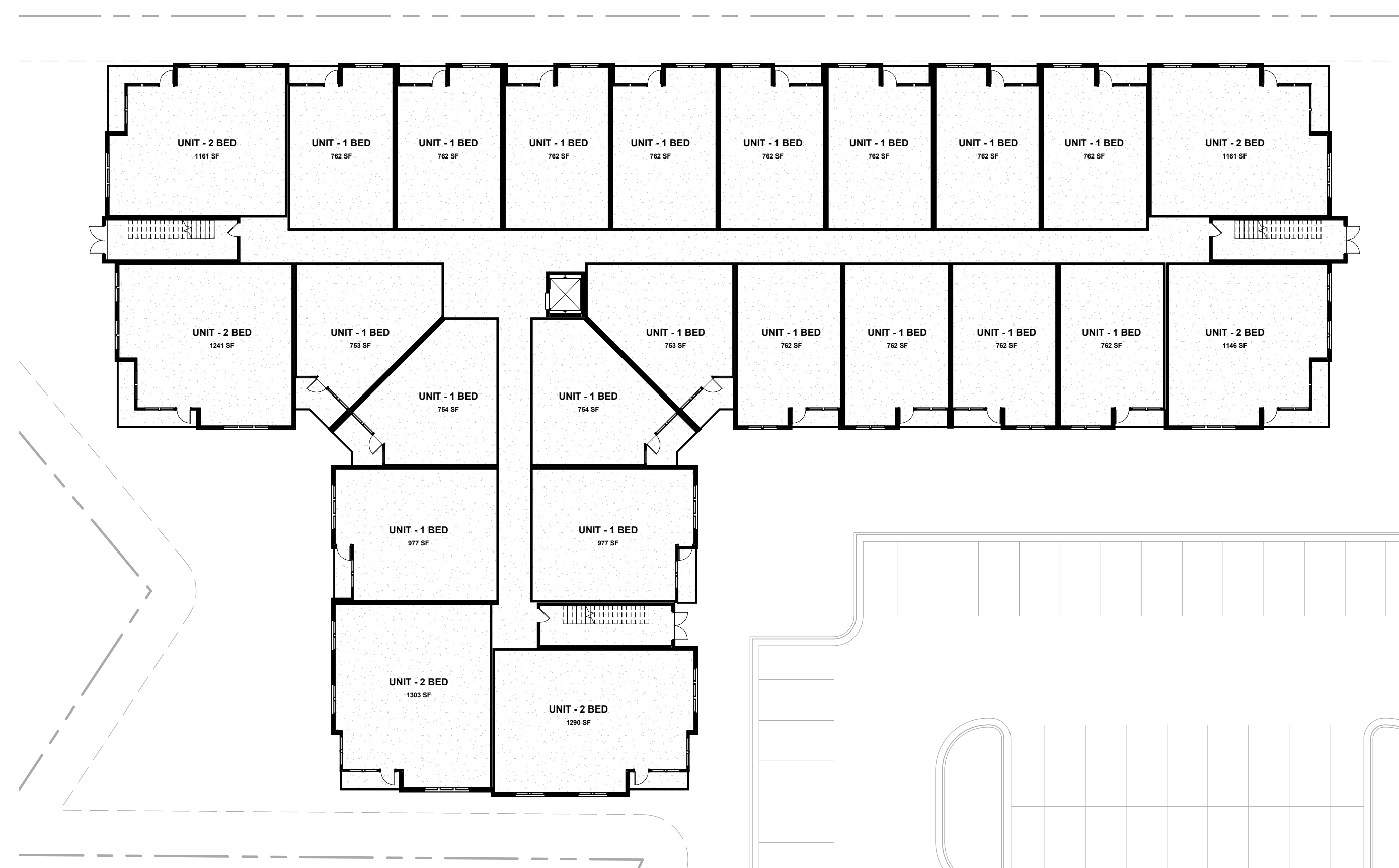


BUILDINGS 3 & 4	
Rentable SF / Level:	16,111 SF
Rentable SF Total:	64,444 SF
Building Height:	4 Levels
	53'-11" roof ridge
Units / Level:	16
1 Bedrooms Total:	40
2 Bedrooms Total:	24
Total Units / Bldg:	64

BUILDING 1 ELEVATIONS



BUILDING 1 FACING HENRY CLOWER BLVD
SCALE 3/32"



BUILDING 1 FACING WEST
SCALE 3/32"

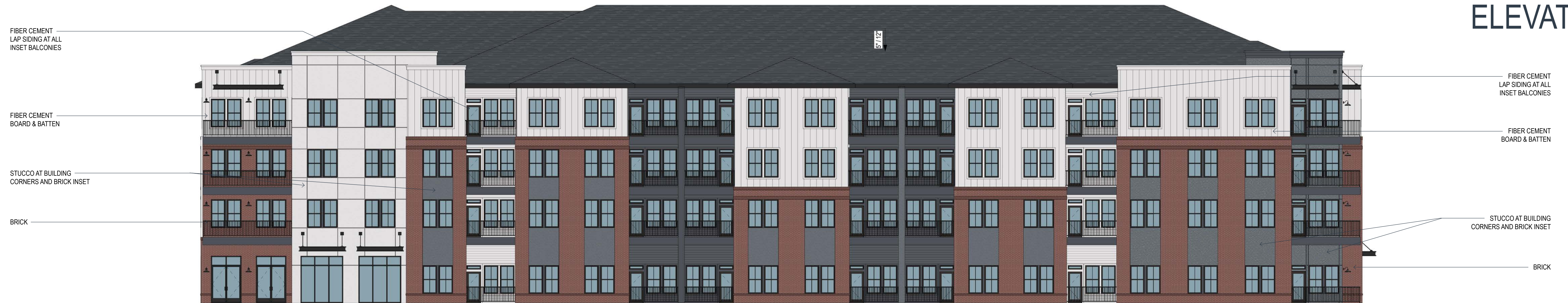


BUILDING 1 FACING SOUTH
SCALE 3/32"



BUILDING 1 FACING EAST
SCALE 3/32"

BUILDING 2 ELEVATIONS



BUILDING 2 FACING HENRY CLOWER BLVD
SCALE 3/32"



BUILDING 1 FACING WEST
SCALE 3/32"

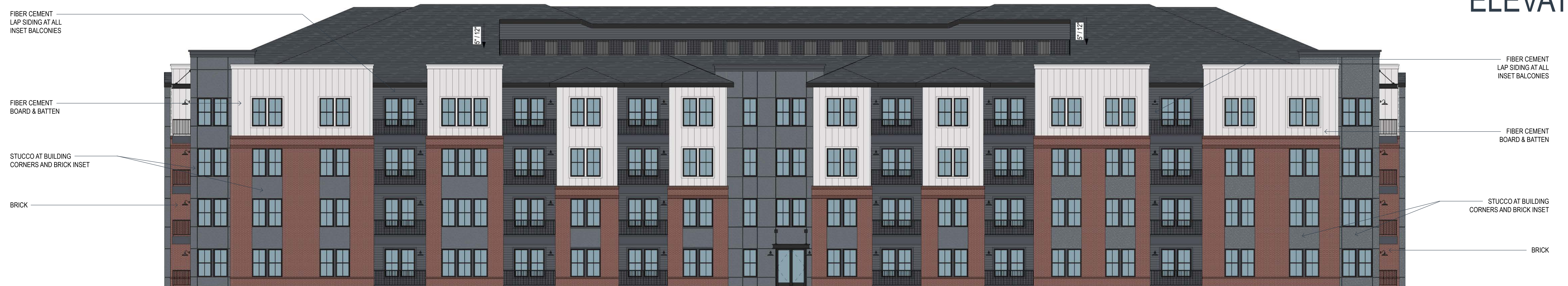


BUILDING 1 FACING SOUTH
SCALE 3/32"



BUILDING 1 FACING EAST
SCALE 3/32"

BUILDING 3 & 4 ELEVATIONS



BUILDING 3 FACING WEST | BUILDING 4 FACING SOUTH
SCALE 3/32"



BUILDING 3 FACING NORTH | BLDG 4 FACING WEST
SCALE 3/32"



BUILDING 3 FACING EAST | BLDG 4 FACING NORTH
SCALE 3/32"



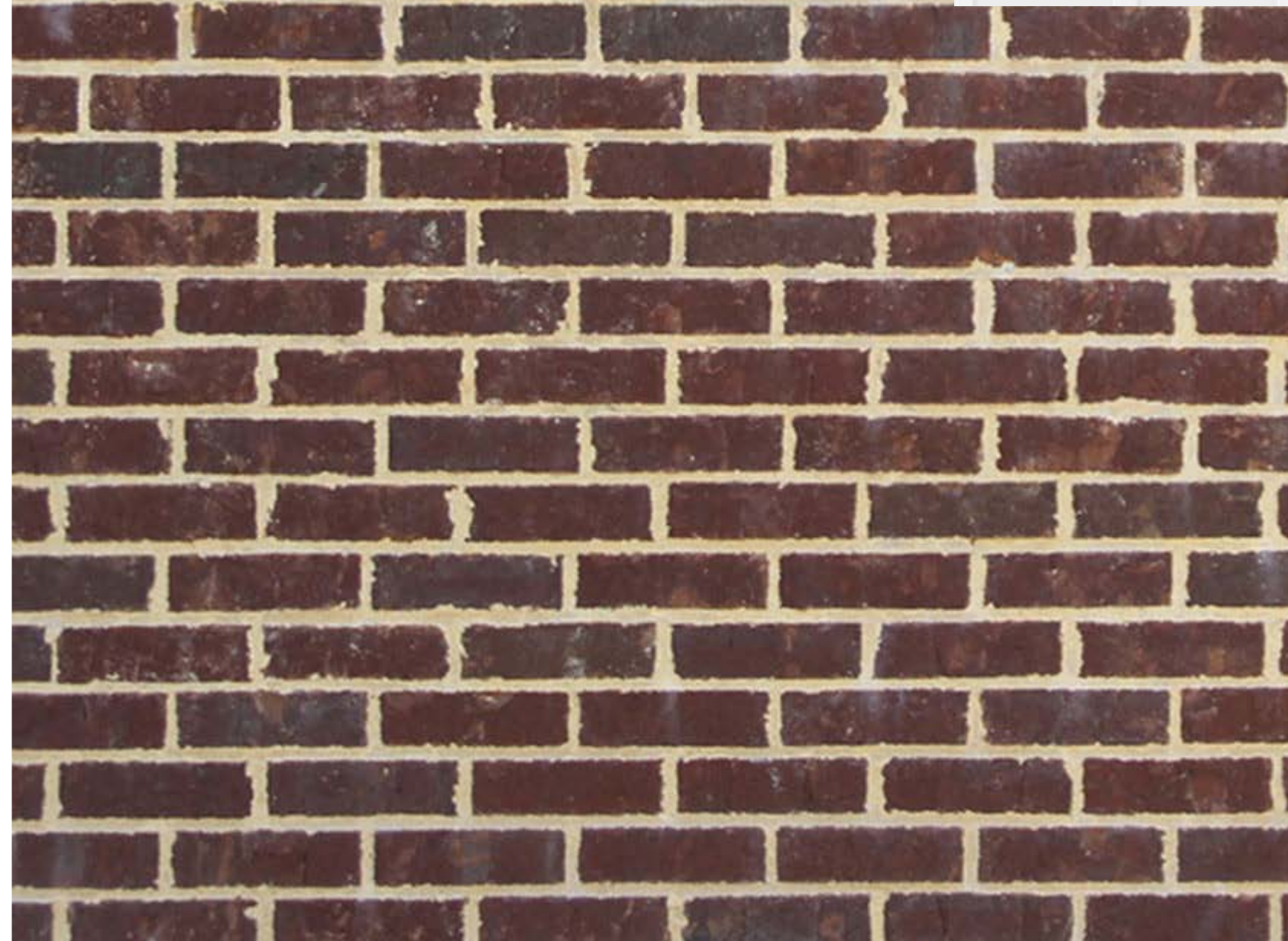
BUILDING 3 FACING SOUTH | BLDG 4 FACING EAST
SCALE 3/32"

EXTERIOR BUILDING MATERIALS ELEVATIONS

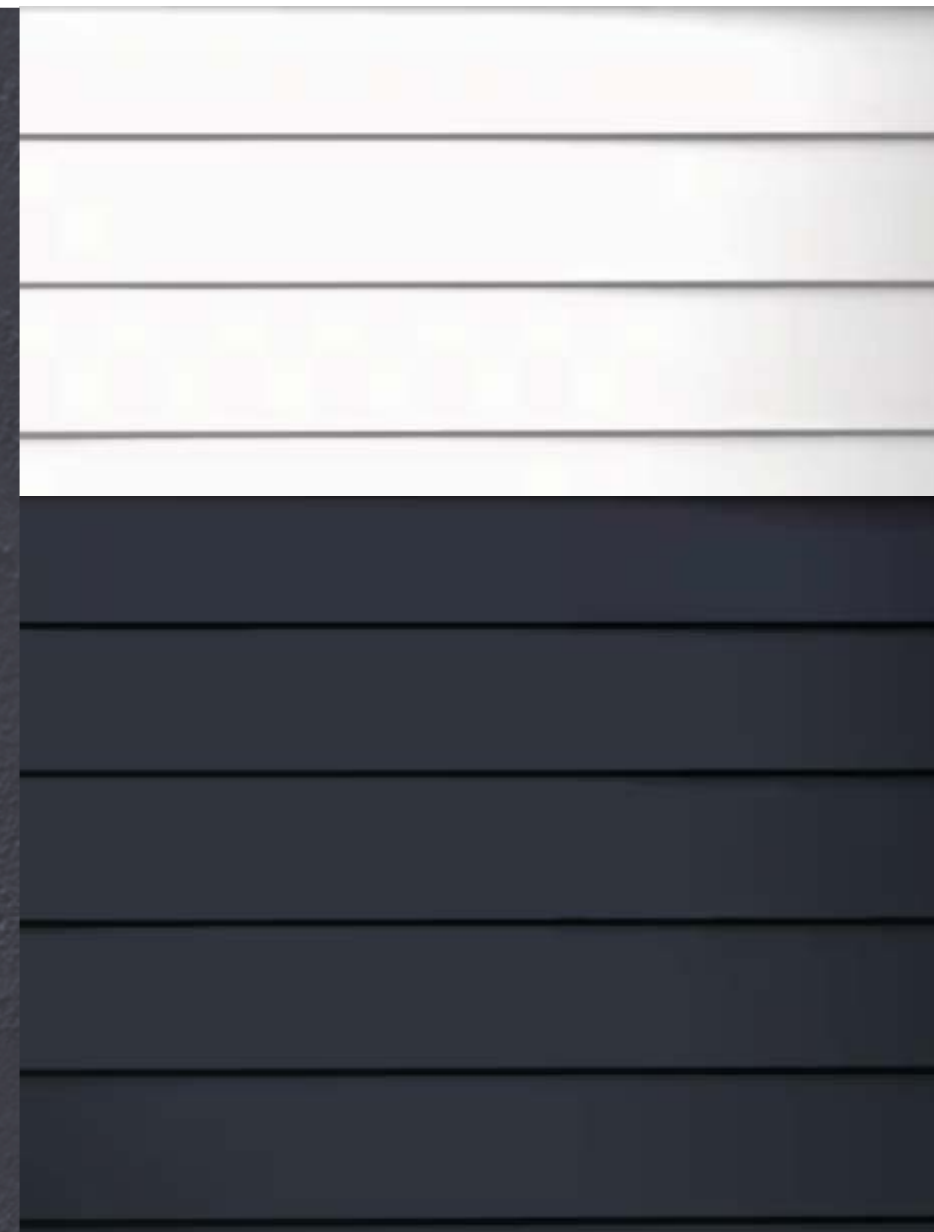
	BRICK (SF)	BRICK %	STUCCO (SF)	STUCCO %	FC LAP (SF)	FC B&B (SF)	ALL FIBER CEMENT %	TOTAL MATERIAL (SF)	OPENINGS (SF)	FAÇADE (SF)	OPENINGS %
BUILDING 1											
NORTH	2726	35%	1608	20%	1637	1891	45%	7862	4348	12210	36%
SOUTH	2783	31%	2414	27%	1435	2220	41%	8853	3875	12728	30%
EAST	1792	32%	2027	37%	569	1156	31%	5545	1973	7517	26%
WEST	1998	35%	1734	31%	562	1340	34%	5634	1950	7584	26%
BUILDING 2											
NORTH	2666	34%	1955	25%	1493	1653	40%	7767	4066	11833	34%
SOUTH	2915	35%	2104	25%	1323	1971	40%	8313	3669	11983	31%
EAST	2200	47%	628	13%	479	1345	39%	4652	2713	7365	37%
WEST	2108	38%	1914	34%	417	1150	28%	5588	2031	7619	27%
BUILDINGS 3&4											
NORTH	3064	35%	1876	21%	2209	1619	44%	8768	3008	11776	26%
SOUTH	2871	33%	1904	22%	1841	2082	45%	8698	3244	11942	27%
EAST	870	31%	1430	50%	0	539	19%	2840	1055	3894	27%
WEST	870	31%	1430	50%	0	539	19%	2840	1055	3894	27%

RED BRICK

FIBER CEMENT BOARD & BATTEN



FIBER CEMENT LAP SIDING



SMOOTH COAT STUCCO

ASPHALT ROOFING SHINGLES

BUILDING 2 AT HENRY CLOWER DRIVE



BUILDING 2 CLUBHOUSE & POOL

